

The Moors at Arne Project

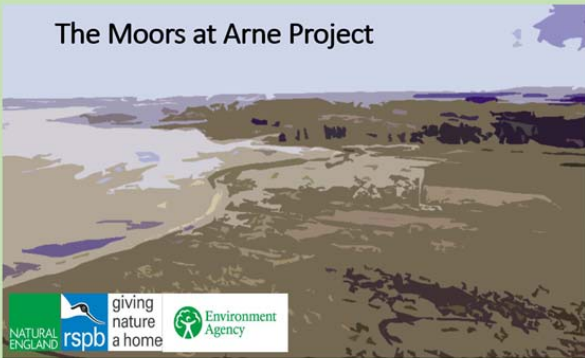
**Stakeholder Liaison
Group Meeting
12 September 2018**



Stakeholder Liaison Group Agenda

1	Introductions		10 mins
2	The Moors at Arne Project	Brief introduction to the project	15 mins
2	Terms of Reference		10 mins
3	Contracting	Clarify role of the Group etc	10 mins
4	Update on the Project and Feedback / discussion	<ol style="list-style-type: none"> 1) Flooding 2) Public Access 3) Construction traffic 4) Location of main embankment 5) Siltation 	40 mins
6	Future topics for discussion	Group and project team to suggest topics	10 mins
7	Next steps in the Project		10 mins
8	Date of next meeting		
9	Close		

The Moors at Arne Project



Introductions

Project Team:

Environment Agency

Helen Morgan,
Neil Watson,
Catherine Farrugia,
Kevin House,
Vanessa Dare

RSPB

Dante Munns

Natural England

Ian Alexander



Introduction to the Project

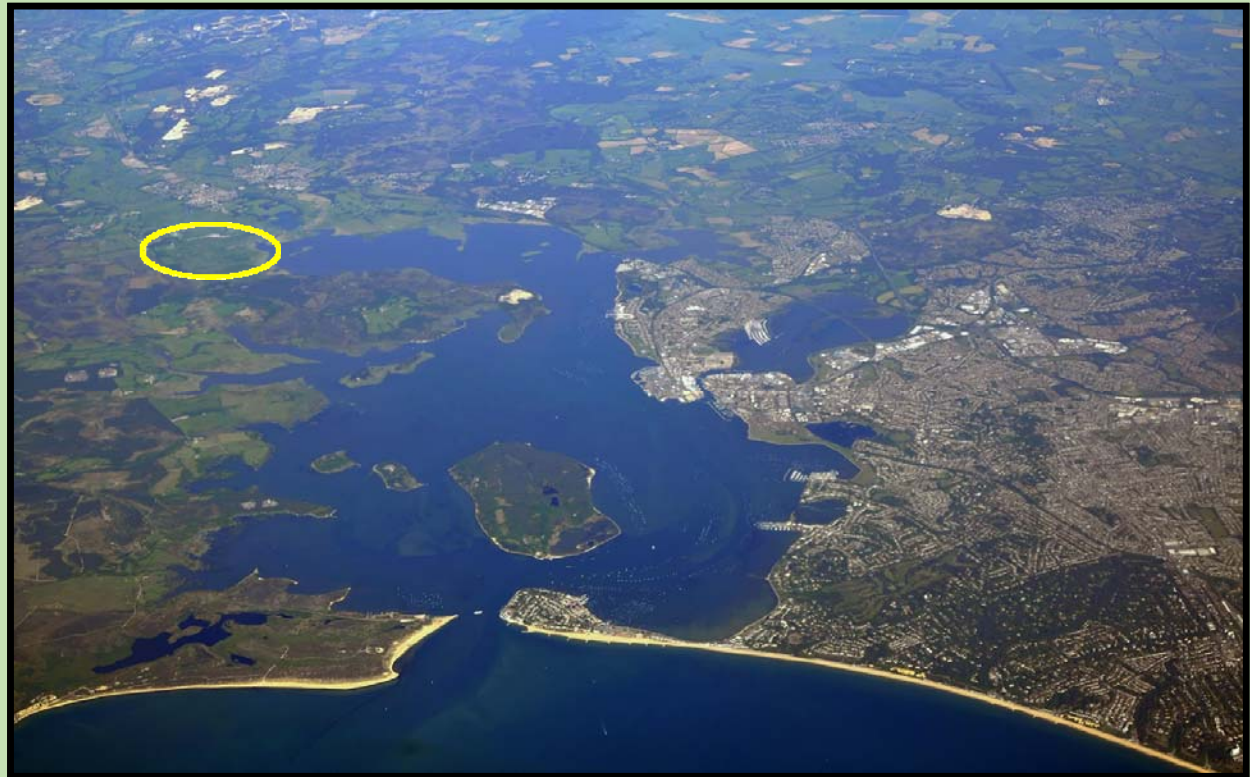
Neil Watson

The Moors at Arne Project



SMP & Strategy

- Shoreline Management Plan (Policy 2012)
- Poole & Wareham Strategy (2015)
- Poole Harbour Habitat Creation Review



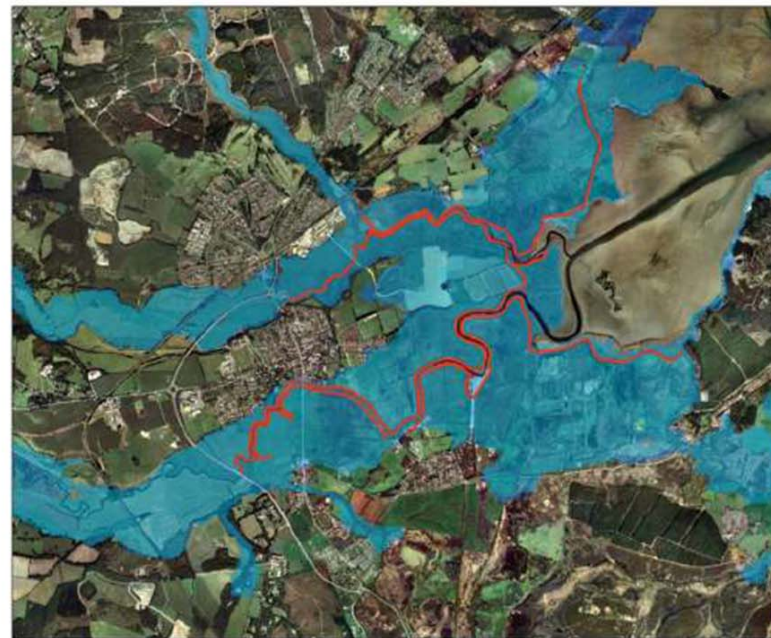
The Moors at Arne Project



SMP & Strategy

- Shoreline Management Plan (Policy)
- Poole & Wareham Strategy (Detail)
- Poole Harbour Projects

Coastal change and Wareham: The Future



- The Shoreline Management Plan policy for Wareham is 'Managed Realignment'

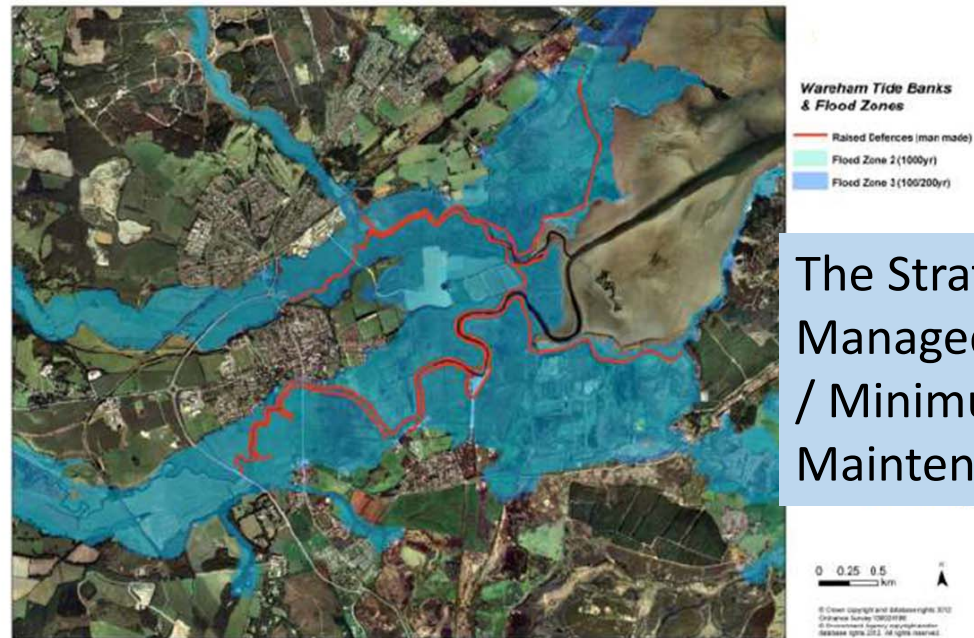
The Moors at Arne Project



SMP & Strategy

- Shoreline Management Plan (Policy)
- Poole & Wareham Strategy (Detail)
- Poole Harbour Projects

Coastal change and Wareham: The Future



The Strategy approach is Managed Realignment / Minimum Maintenance

The Moors at Arne Project



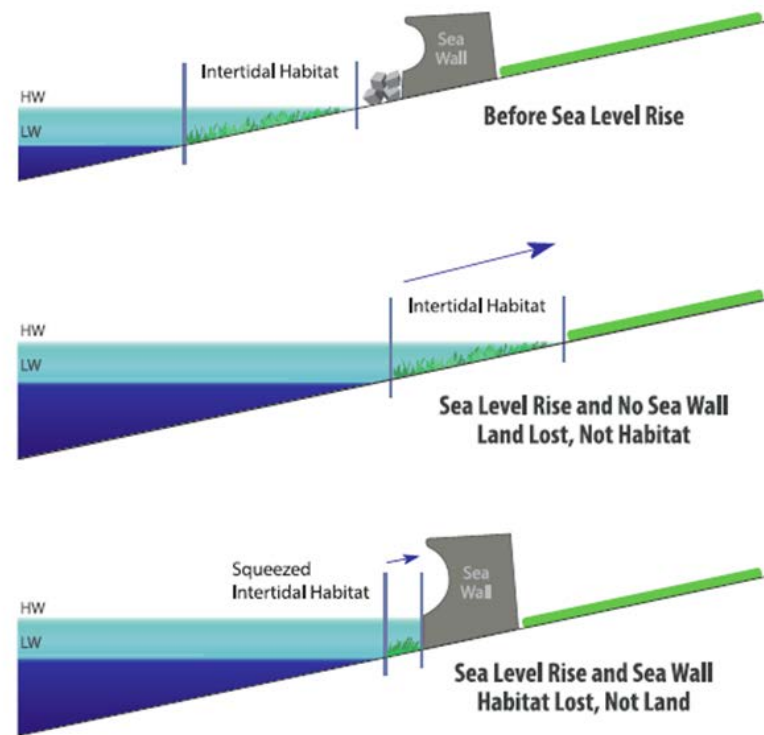
Habitat Creation Requirements

- Intertidal Habitat Loss Prediction (cumulative)
 - Epoch 1 - 2030 – 44ha
 - Epoch 2 - 2060 – 87ha
 - Epoch 3 - 2110 – 313ha
- Requirement for Compensatory habitat. IROPI case approved.

The Moors at Arne Project



Coastal Squeeze

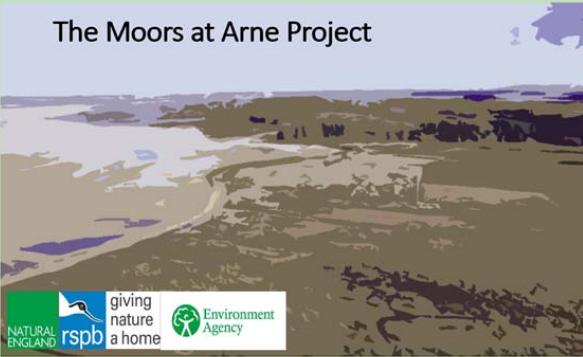


Habitat Creation Requirements

- Intertidal Habitat Loss Prediction (cumulative)
 - Epoch 1 - 2030 – 44ha
 - Epoch 2 - 2060 – 87ha
 - Epoch 3 - 2110 – 313ha
- Requirement for Compensatory habitat. IROPI case approved.



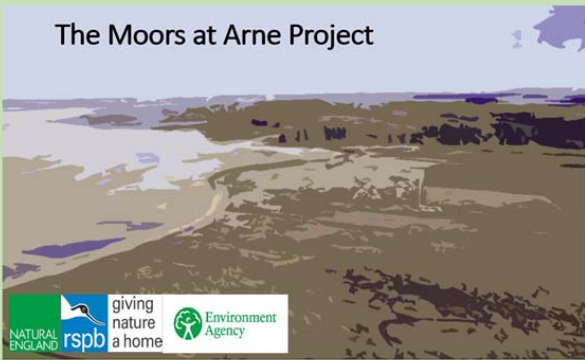
The Moors at Arne Project



Habitat Creation Requirements

- Intertidal Habitat Loss Prediction (cumulative)
 - Epoch 1 - 2030 – 44ha
 - Epoch 2 - 2060 – 87ha
 - Epoch 3 - 2110 – 313ha
- Requirement for Compensatory habitat. IROPI case approved.

The Moors at Arne Project



Habitat Creation Objectives

- Working with Natural Processes
- Developing a mosaic of Intertidal habitats across the site including:

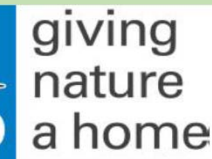
Saltmarsh

Mudflat

Saline Lagoons

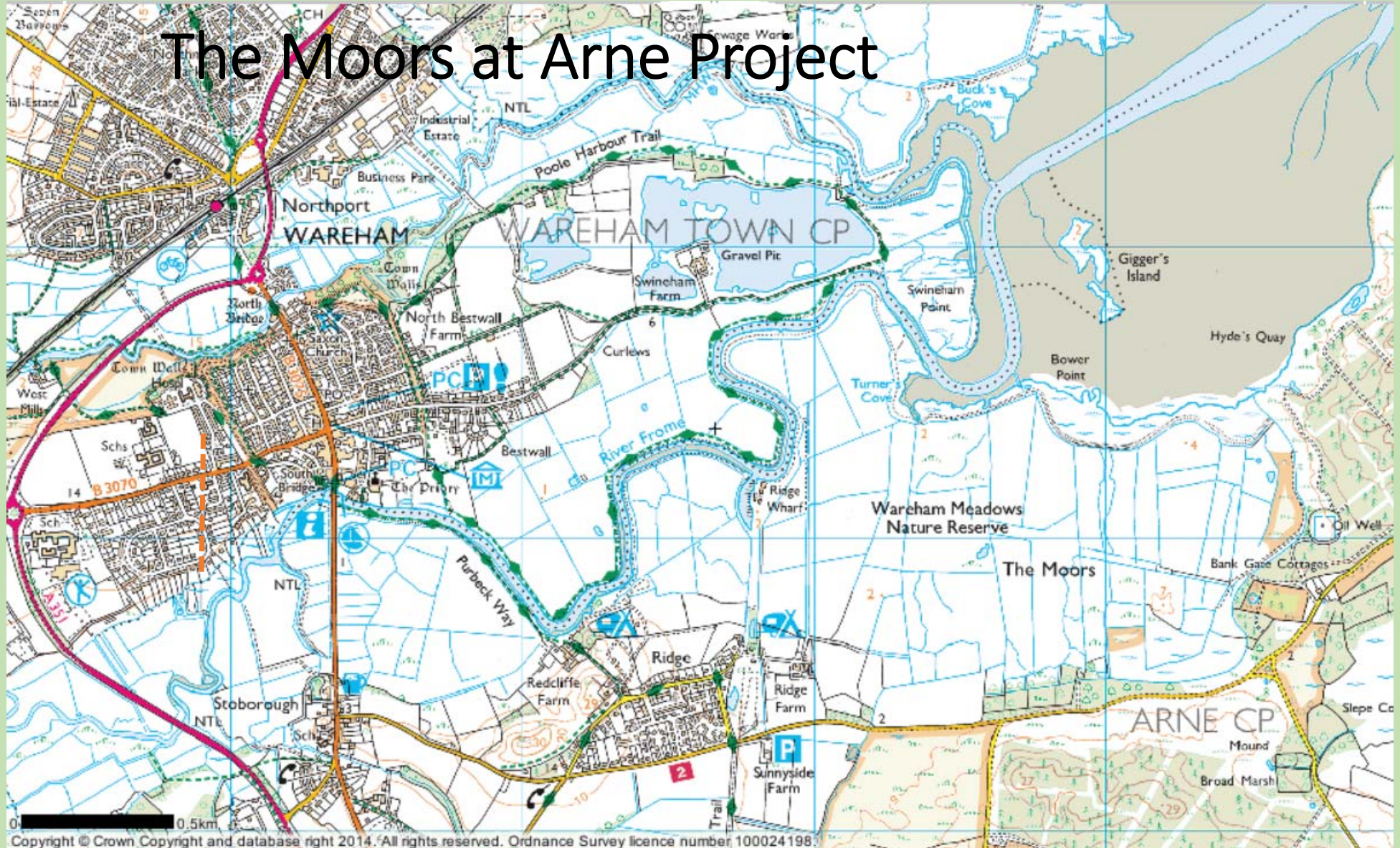


- Protecting rare and irreplaceable habitats in situ – Cladium Fen

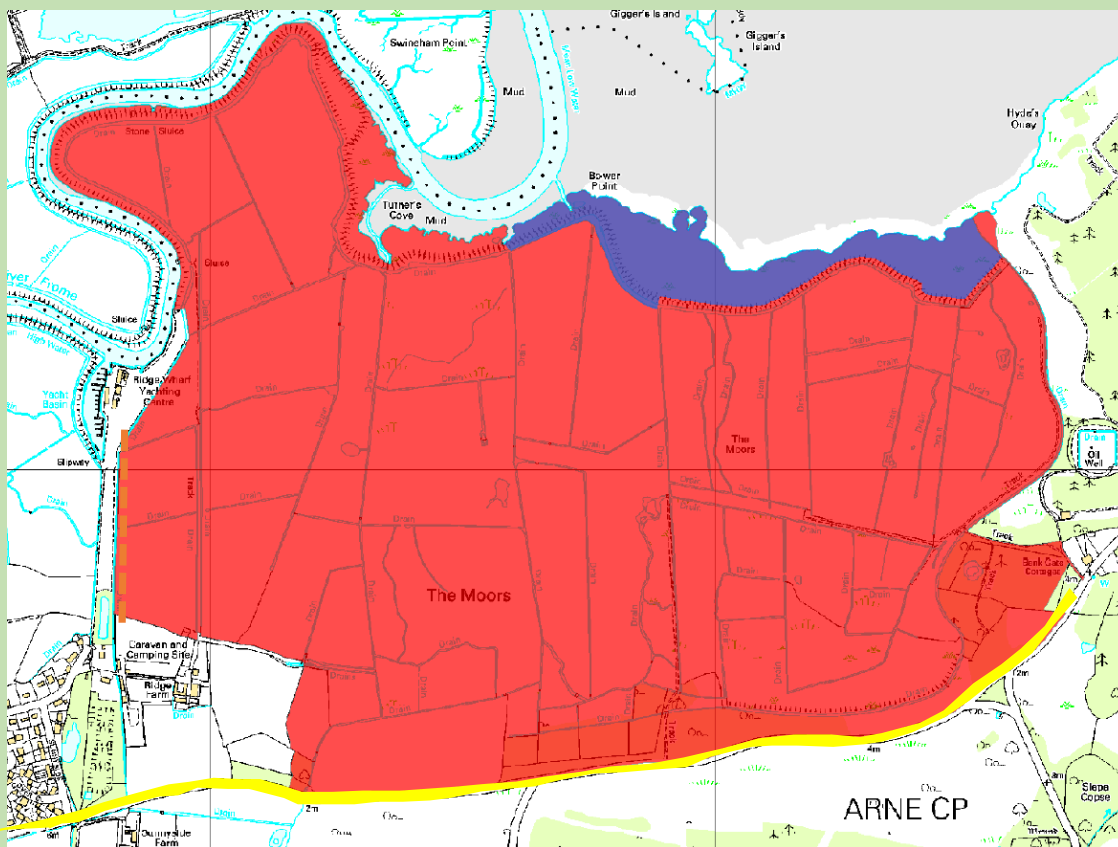


Environment Agency

The Moors at Arne Project



The Moors at Arne Project



Site Area:

Red = RSPB

Blue = Natural England

Yellow = Arne Road



giving
nature
a home



The Moors at Arne Project



The Moors at Arne





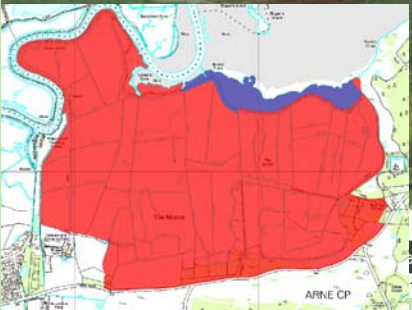
Arne Moor 3D Visualisation



Find address or place



View



eye alt 112.17 Meters

USGS | LIDAR Data captured by the Environment Agency. Aerial Photography from the Channel Coastal Observatory

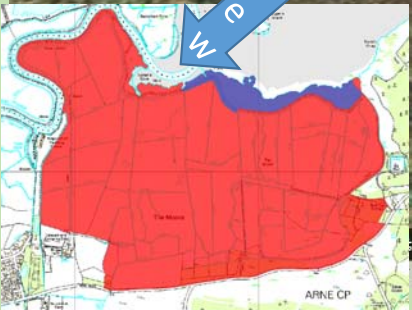
Powered by Esri



Arne Moor 3D Visualisation



Find address or place



eye alt 98.77 Meters

P, USGS | LIDAR Data captured by the Environment Agency Aerial Photography from the Channel Coastal Observatory

Powered by Esri



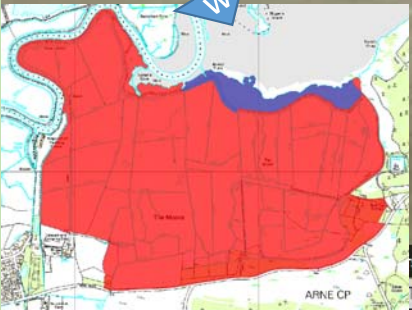
Arne Moor 3D Visualisation



Find address or place



View



eye alt 373.08 Meters

USGS | LIDAR Data captured by the Environment Agency Aerial Photography from the Channel Coastal Observatory

Powered by Esri



Arne Moor 3D Visualisation



Find address or place



0 100 meters

© Crown Copyright and the Environment Agency. All rights reserved. LIDAR Data captured by the Environment Agency Aerial Photography from the Channel Coastal Observatory

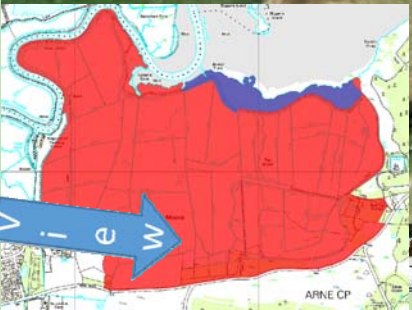
Powered by Esri



Arne Moor 3D Visualisation



Find address or place

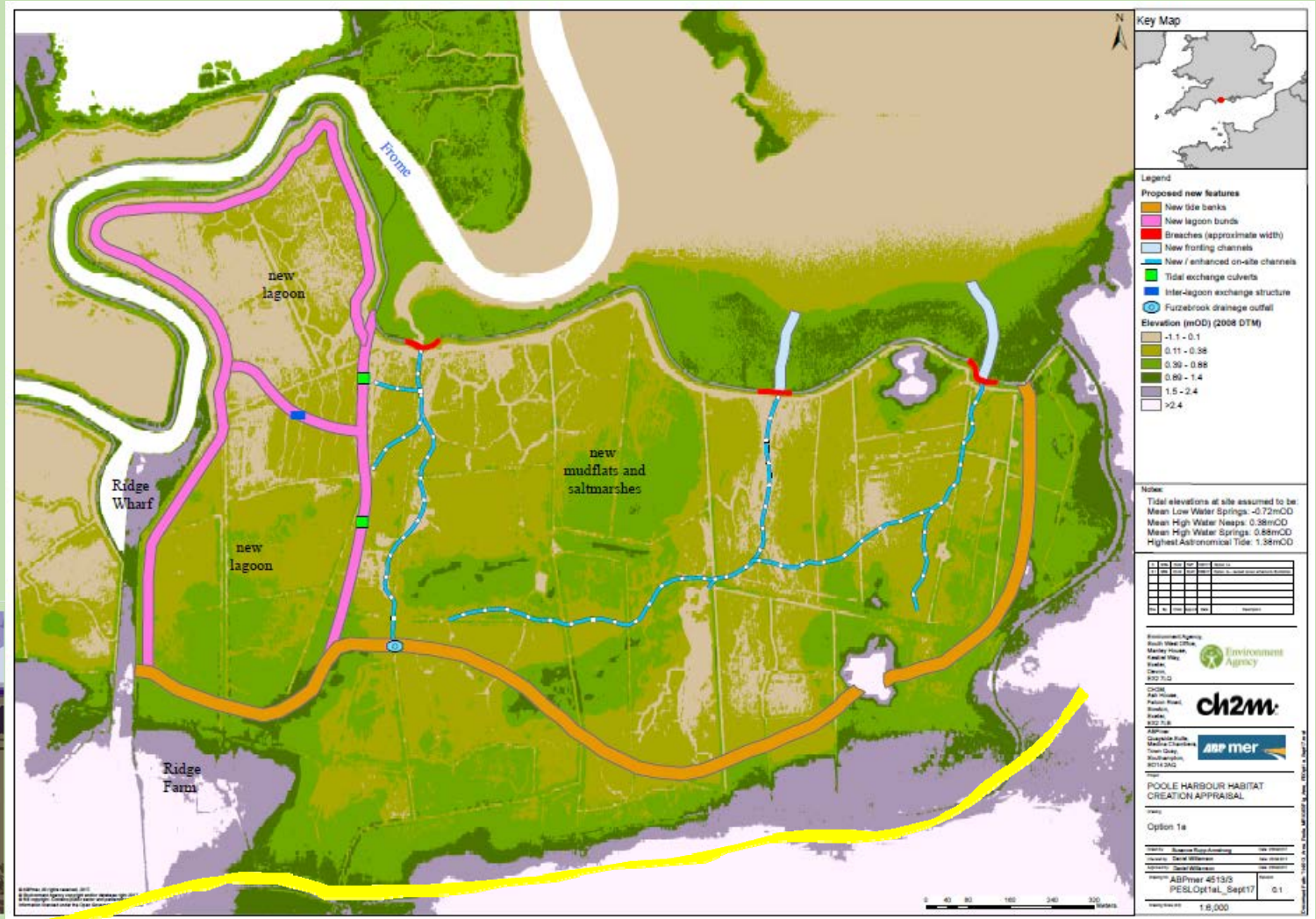


eye alt 397.11 Meters

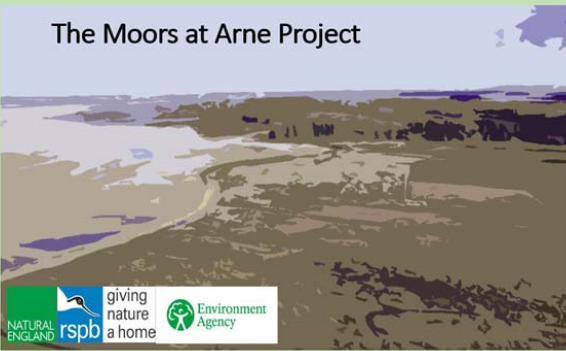
USGS | LIDAR Data captured by the Environment Agency Aerial Photography from the Channel Coastal Observatory

Powered by Esri

Short Listed Options (1a) – Lagoons in the West



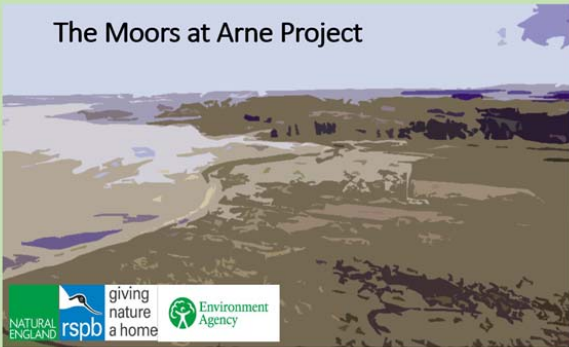
The Moors at Arne Project



Short Listed Options (1b) – Lagoons in the East



The Moors at Arne Project



Short List Options (1c) – Eastern Breaches



The Moors at Arne Project



Engagement with public and stakeholders

- **Email:**
- **Website:**
- **Clinics:**
- **Arne Parish Council**
- **Stakeholder meetings:**
- **Public Consultation:**
- **Single point of contact:**



The Moors at Arne Project



Project Appraisal Investigations

- Fluvial
- Tidal
- Groundwater
- Surface Water
- Ground Investigations



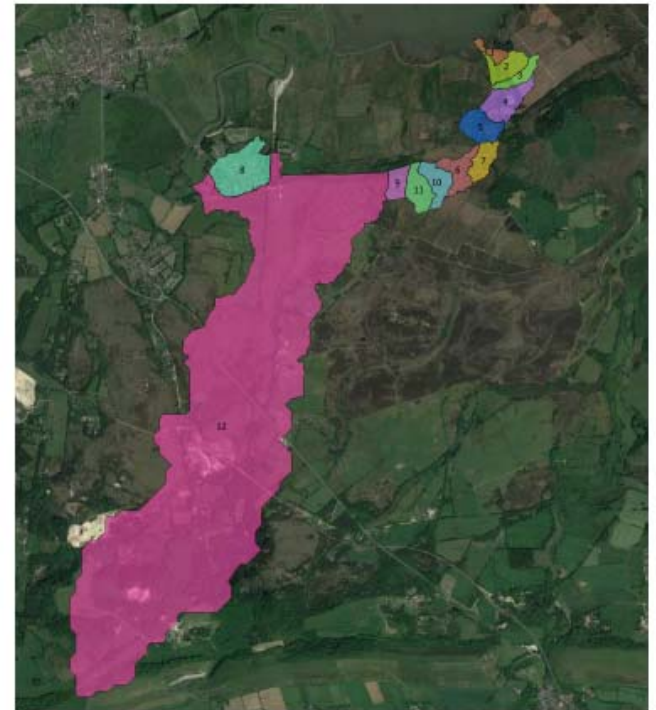
The Moors at Arne Project



Hydrological Modelling

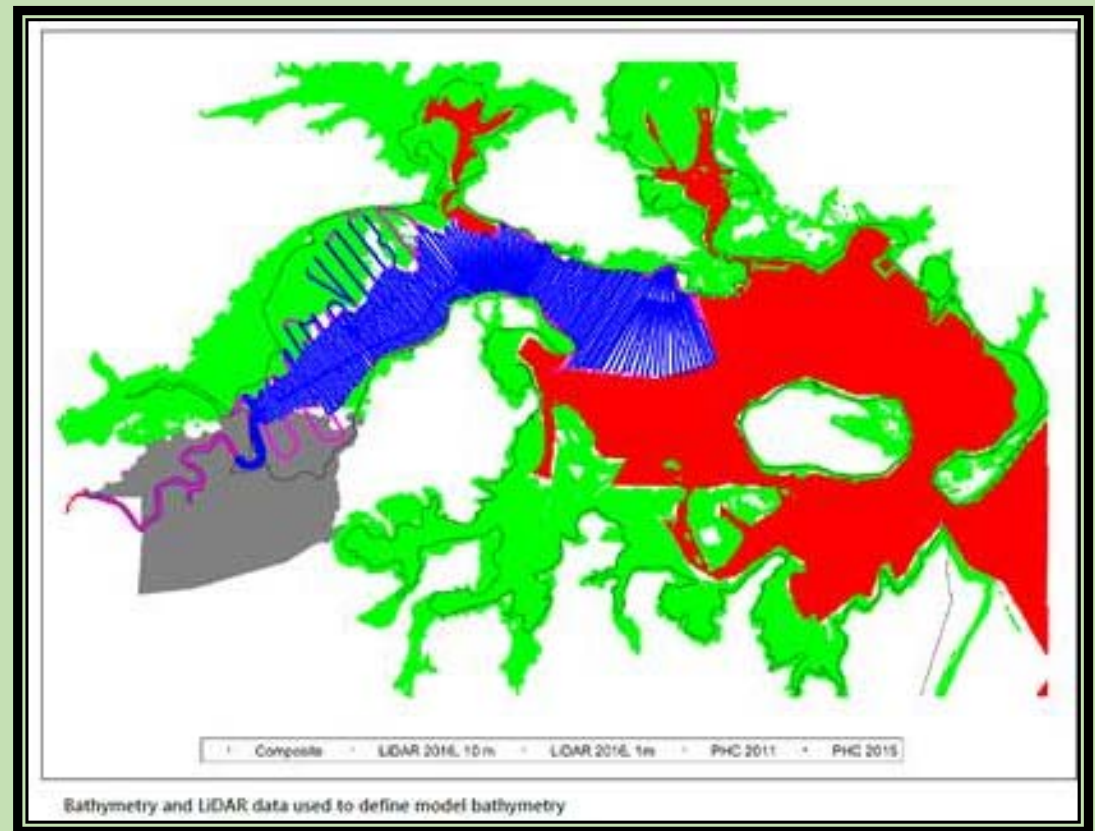
- Method
- Catchments
- Ridge inputs
- Stream water storage on the Moors
- Impact of proposed embankment and outfall structure

The Moors at Arne Project



Inter-tidal modelling

- Flows
- Salinity
- Sediment movement
- Interaction with R. Frome



The Moors at Arne Project



Ridge & Arne Moors Groundwater

- Responding
- Monitoring
- Interpretation



The Moors at Arne Project



Ridge Surface Drainage Investigations

- Responding to concerns
- Survey and results shared
- Impact on project understood
- Liaison with Parish Council



The Moors at Arne Project



Ground Investigations/ material suitability

- Factual description of survey
- Key findings
- Settlement & Maintenance
- Mixing on site
- Importation



The Moors at Arne Project



Project timeline

- Consultation results

Outline Programme - Draft

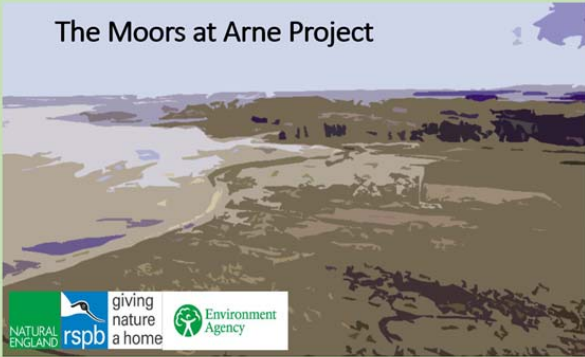


The Moors at Arne Project



Terms of Reference

The Moors at Arne Project



Contracting

- Clarify role of the Group
- Behaviours

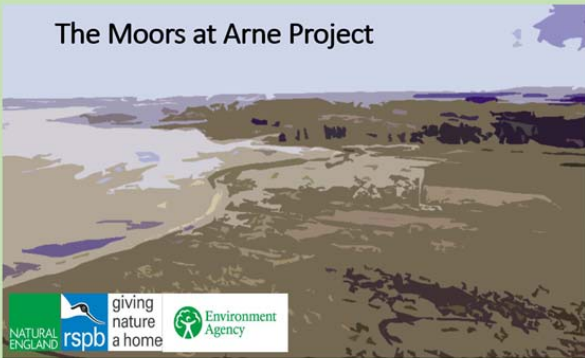
The Moors at Arne Project



Updates

1. Flooding
2. Public Access
3. Construction Traffic
4. Location of main embankment
5. Siltation

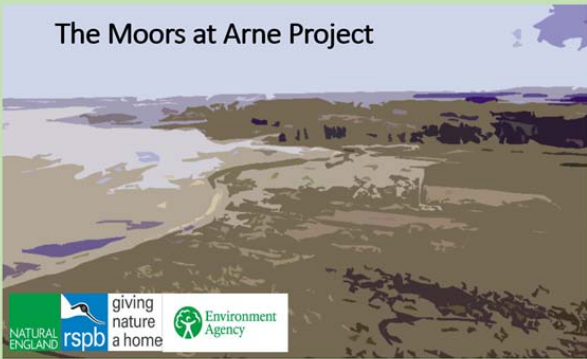
The Moors at Arne Project

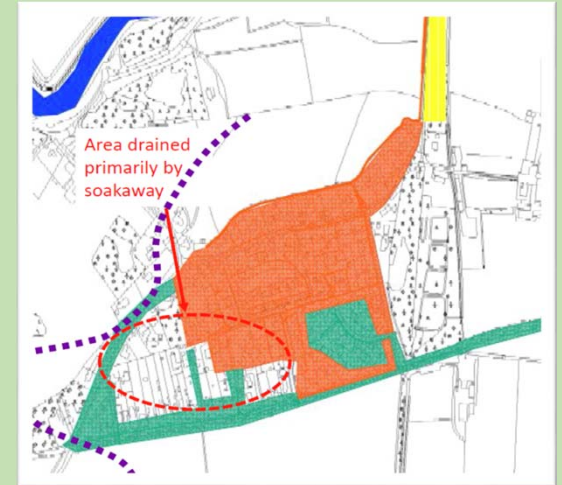
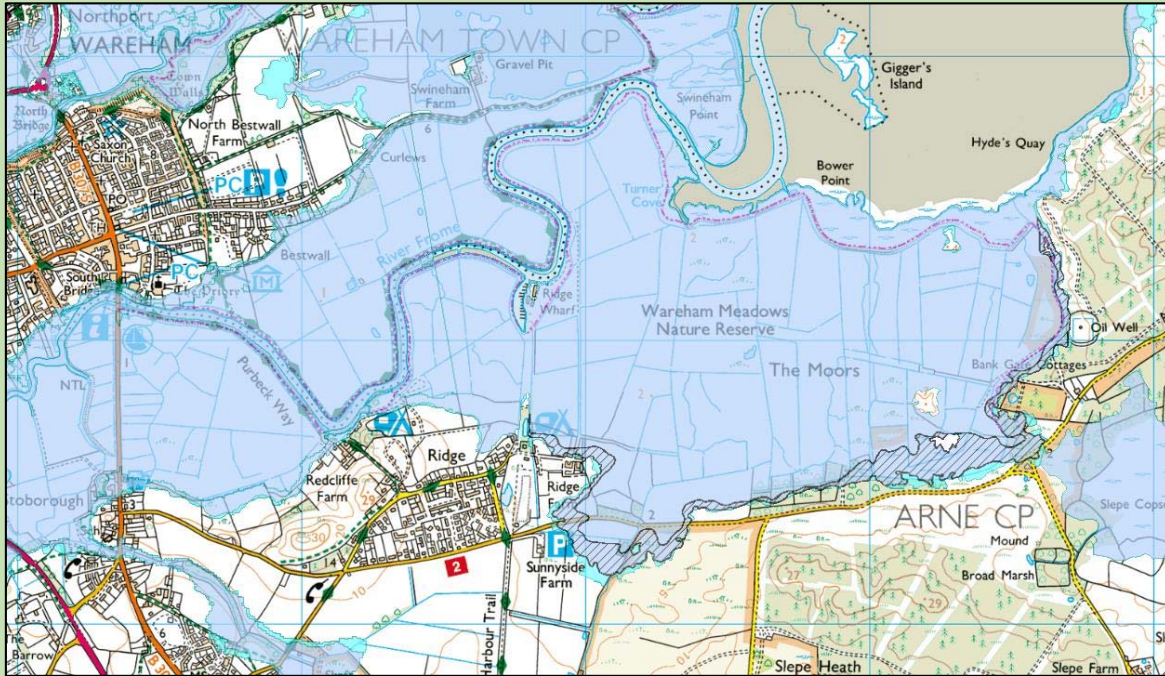


Update: Flooding

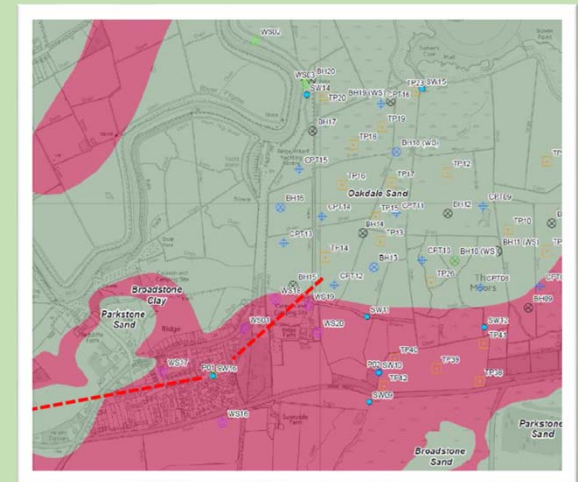
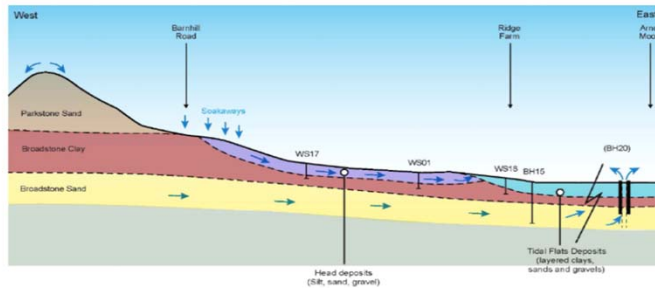
- Tidal
- Surface water
- Ground water

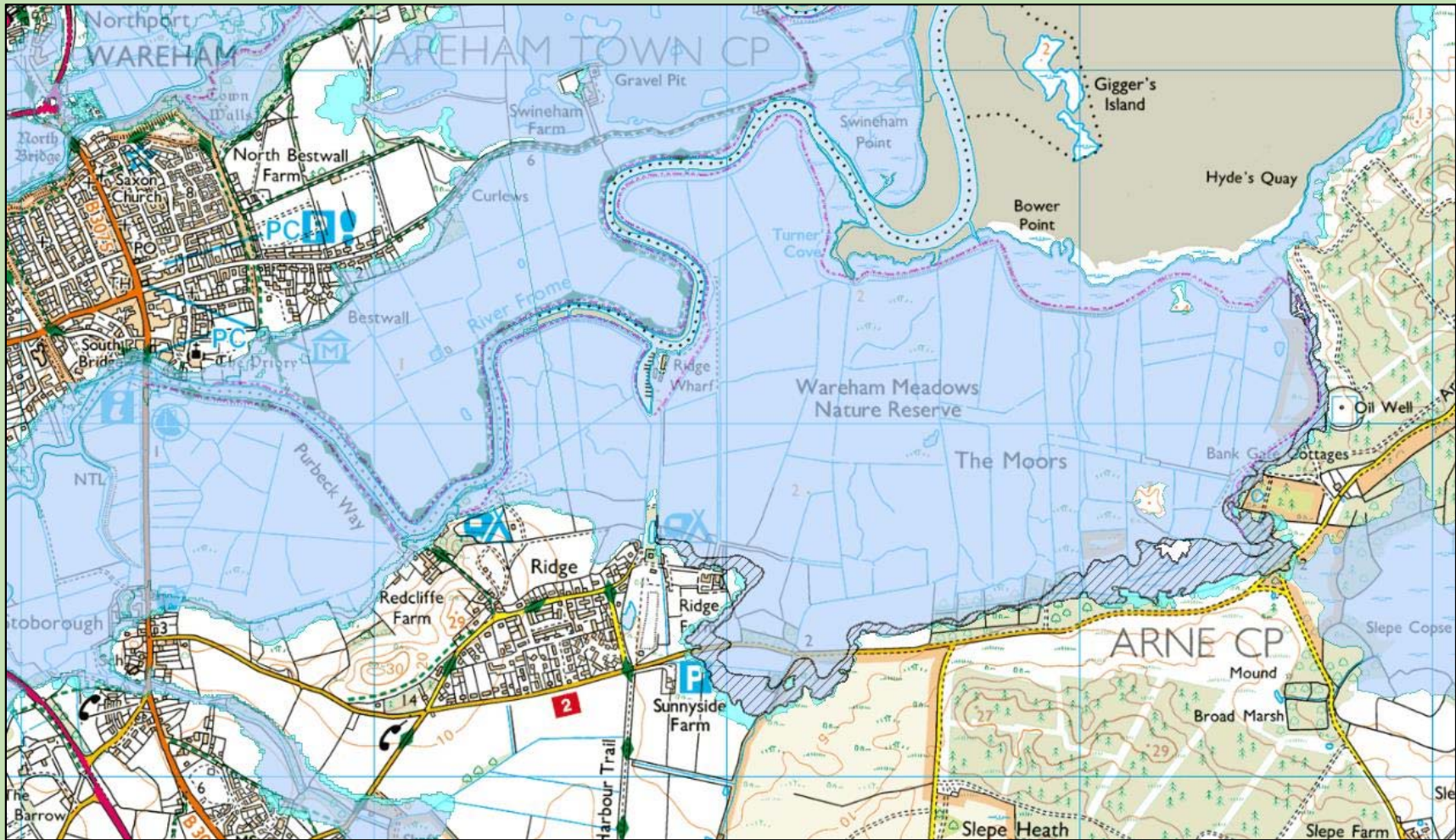
The Moors at Arne Project

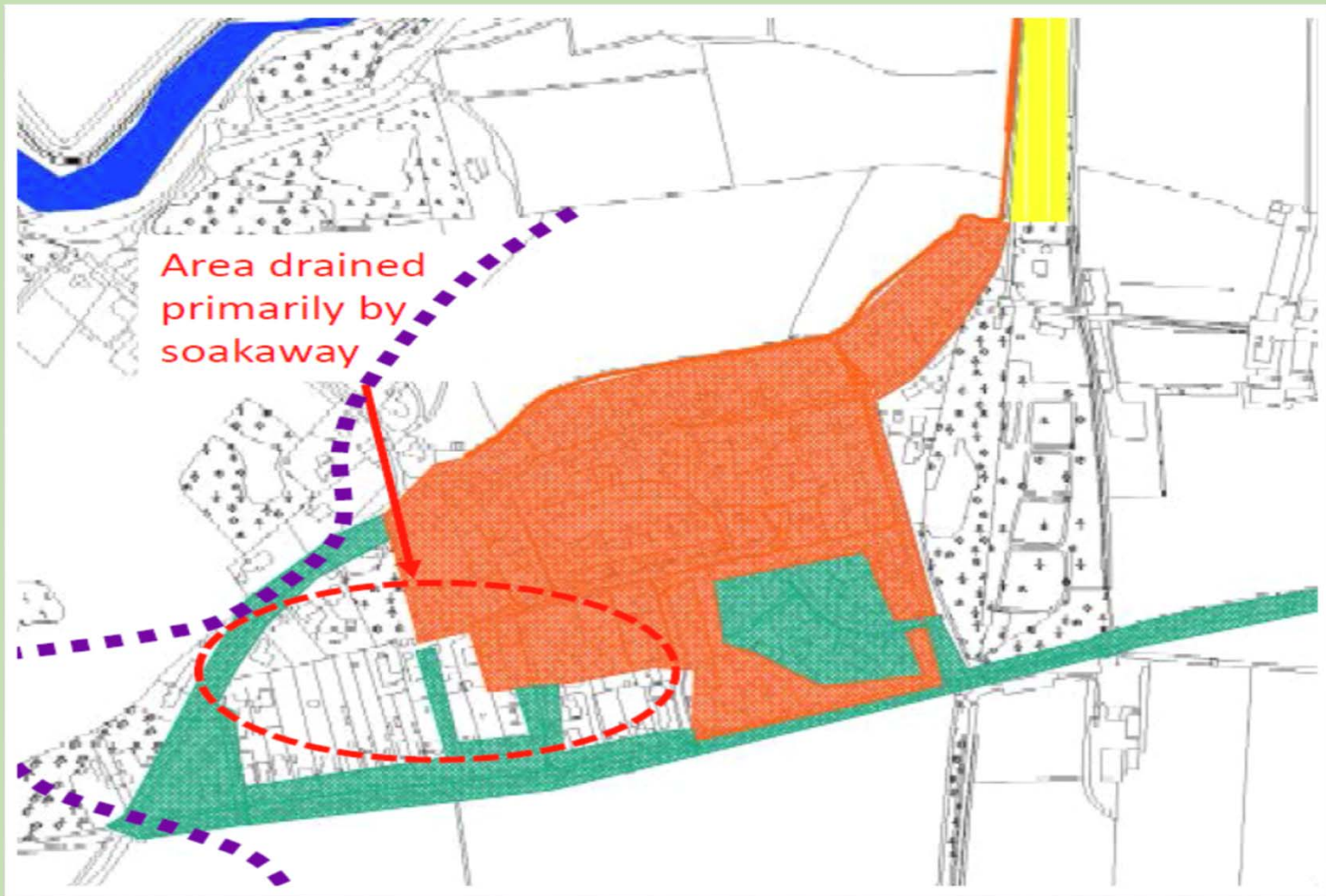


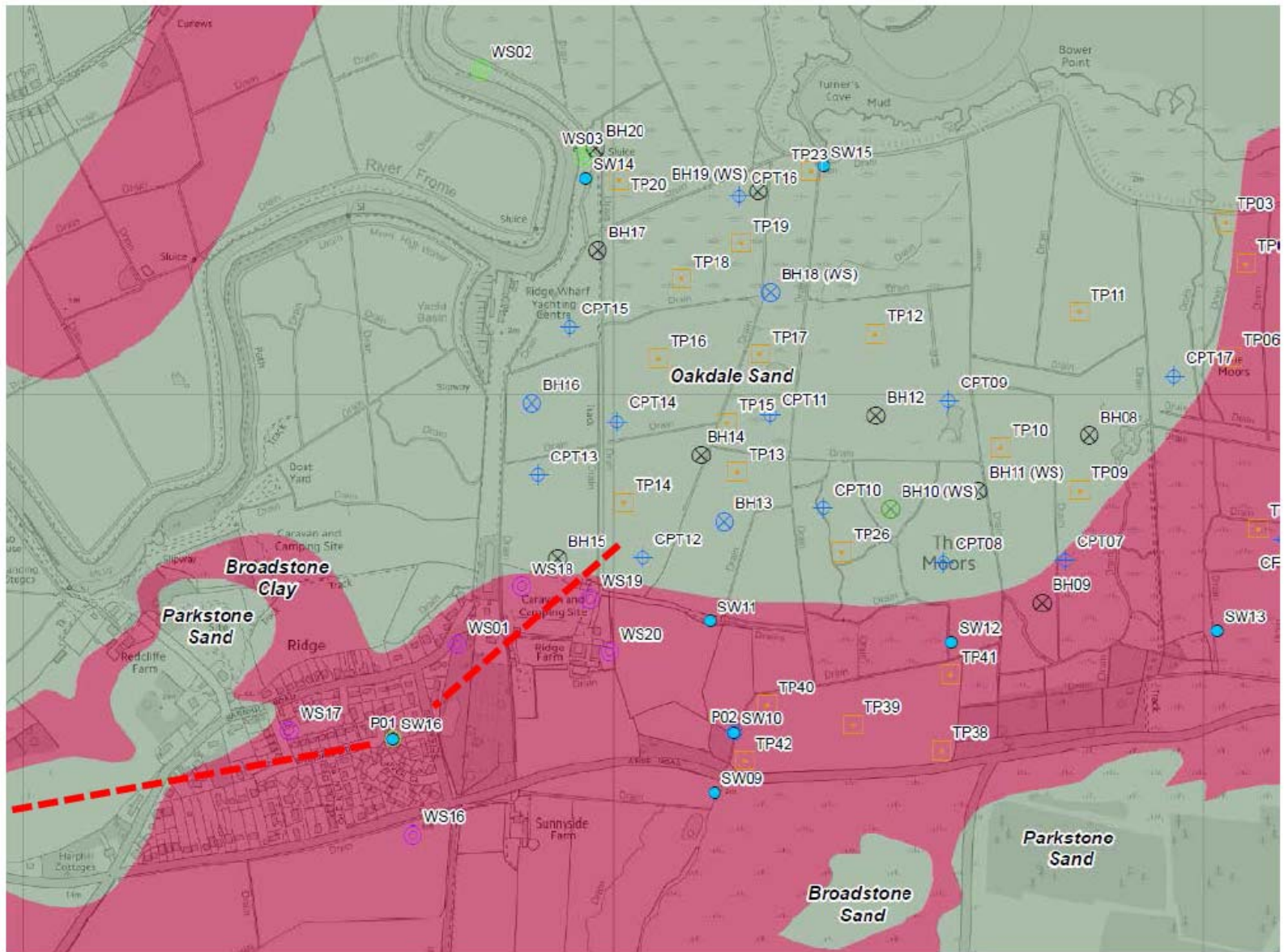


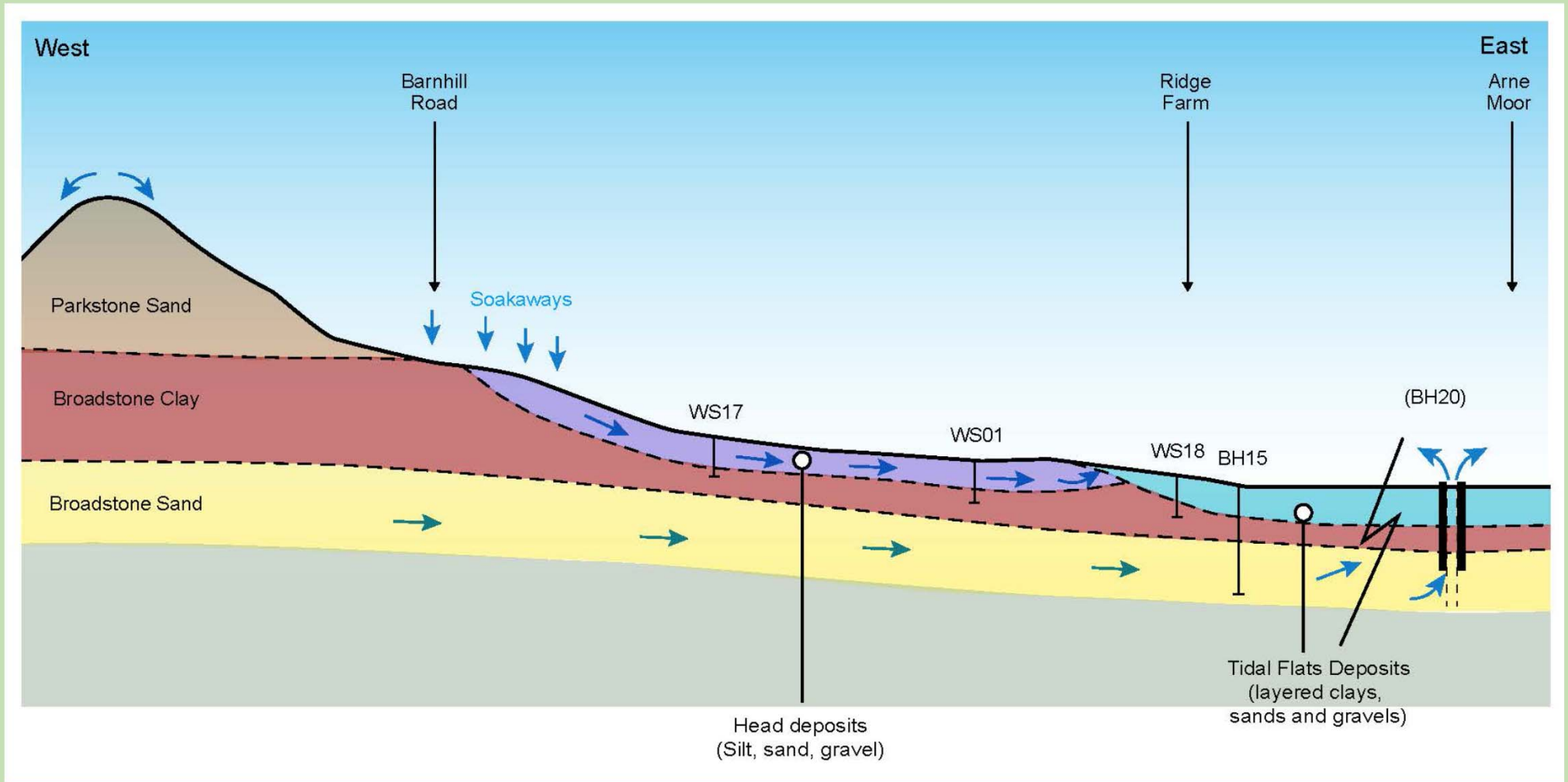
Initial conceptual understanding (schematic section)











Visitor Access Principles:

- We do not want access to have a negative impact on wildlife
- We do want to provide access that will be beneficial to people, especially within local communities
- RSPB Arne will be the main focus of access
- We are not proposing any significant infrastructure at Arne Moors
- Enable 'non-car' access if possible
- Limit access to permitted trails and viewing points



Update: Construction Traffic

- Excavate material from the site as much as possible
- Reduce size and length of embankments as much as possible
- Longer, lower embankments – allows use of a wider variety of materials

The Moors at Arne Project



Update: Location of Main embankment

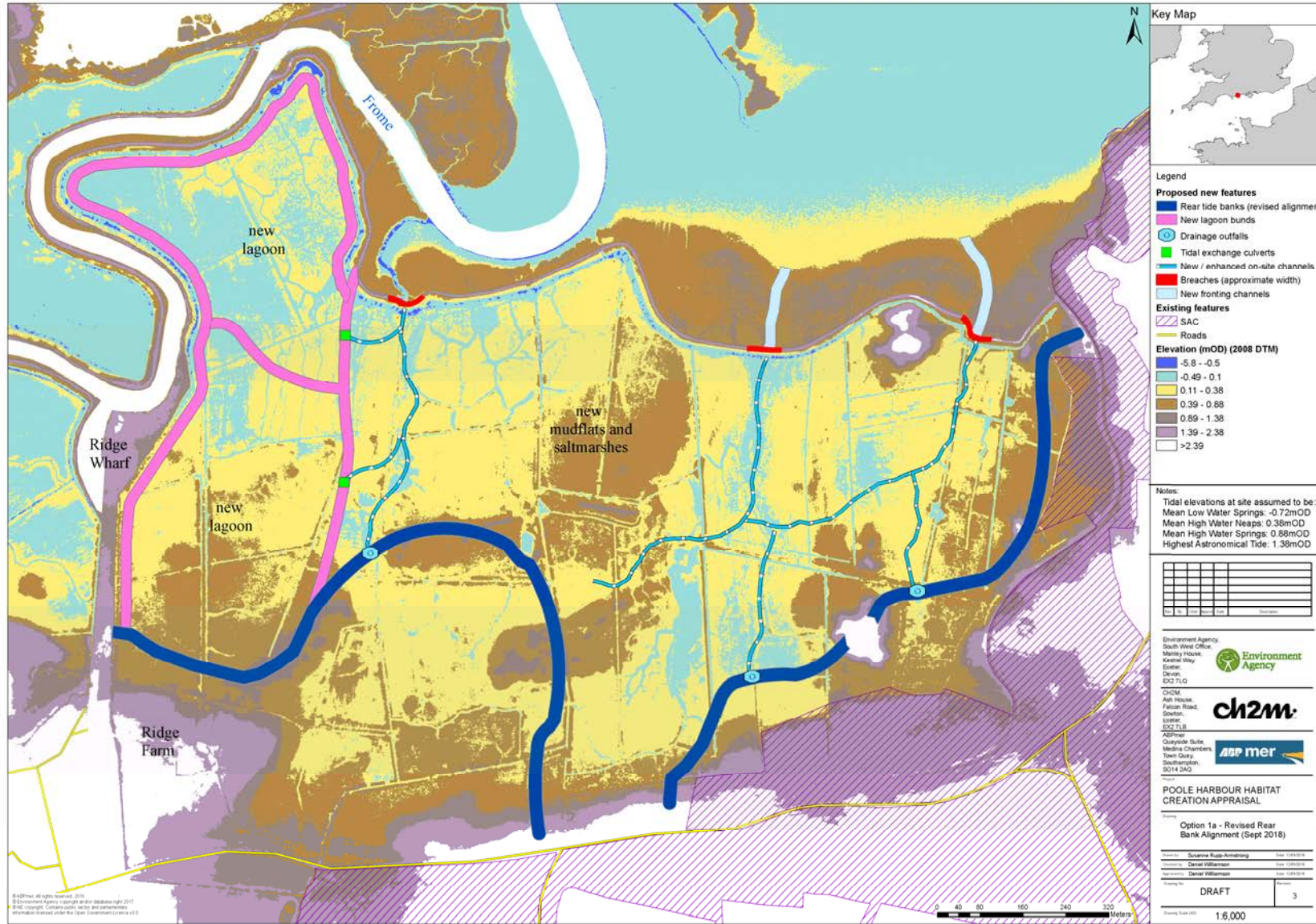
- Location of lagoons

The Moors at Arne Project



Emerging option

The Moors at Arne Project



Update: Siltation in River Frome and Upper Wareham Channel

- Analysis of historic surveys
- Results expected later this year
- Plan to survey area before works start to establish the baseline conditions

The Moors at Arne Project



Future topics for discussion

The Moors at Arne Project



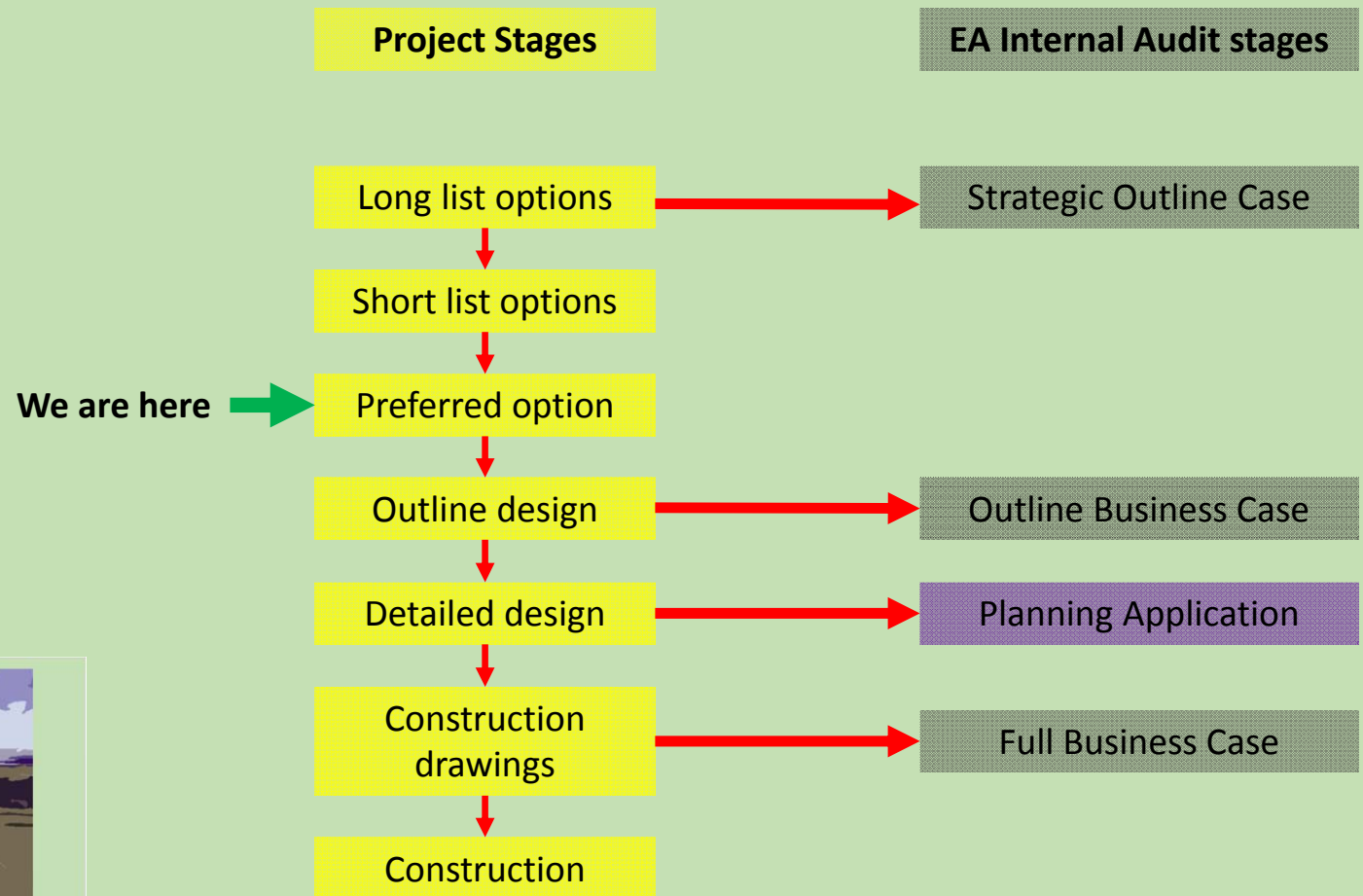
Next Steps

- Groundwater Meeting 25 September
- Public Exhibition – November

The Moors at Arne Project



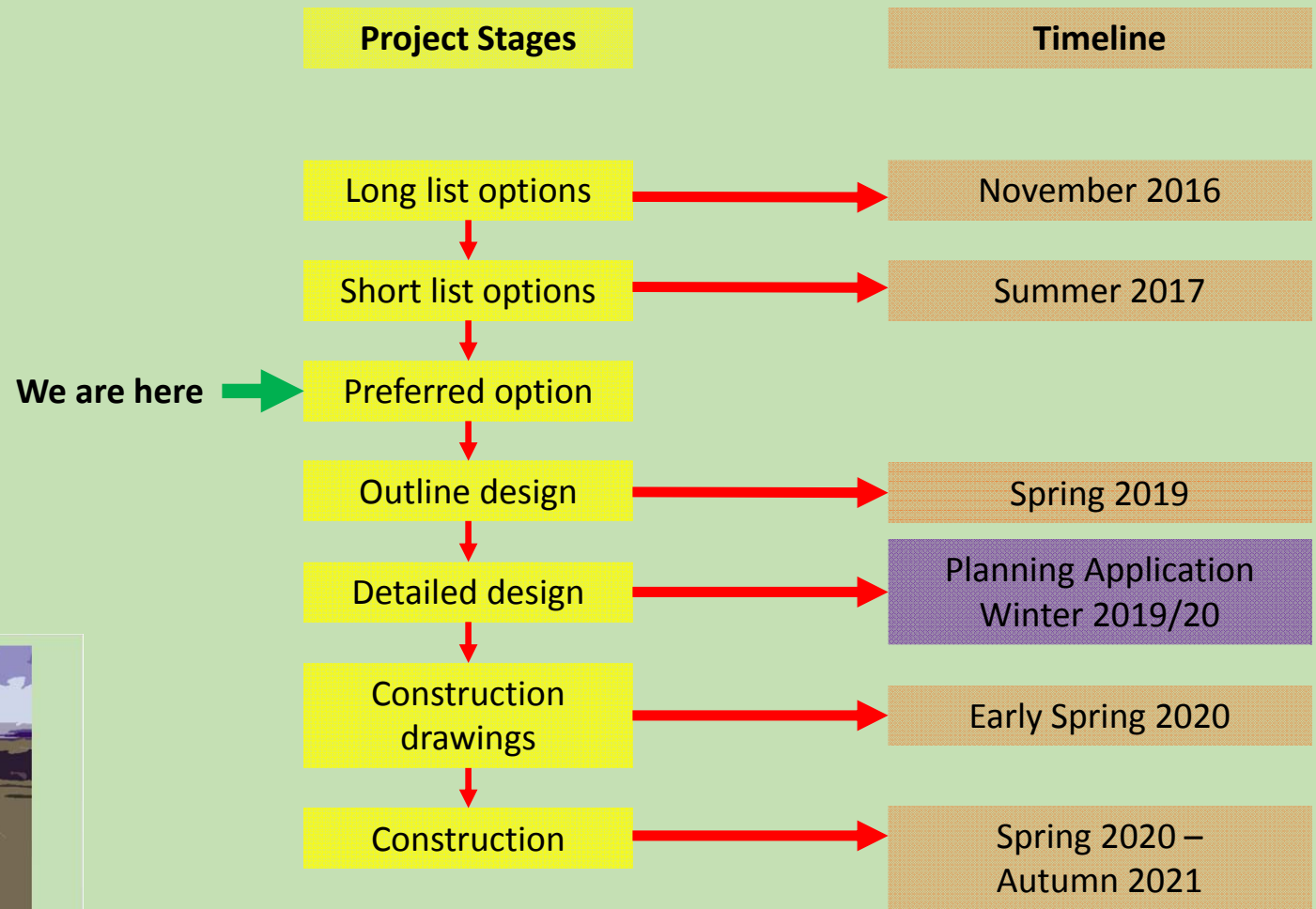
Next Steps



The Moors at Arne Project



Next Steps



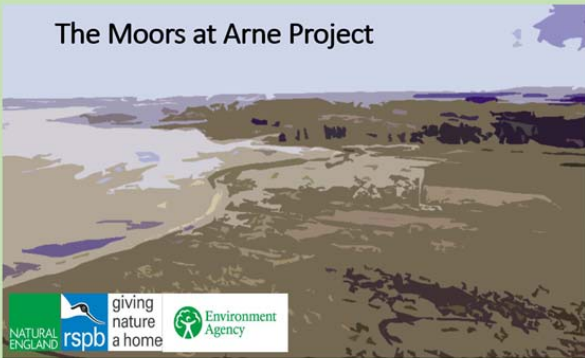
The Moors at Arne Project



Next Meeting

- 18th October?

The Moors at Arne Project



Thank you

- TheMoorsAtArne@environment-agency.gov.uk
- <https://www.dorsetcoast.com/groups/the-moors-at-arne-coastal-change-project/>

The Moors at Arne Project

