

The Moors at Arne Project

Stakeholder Liaison Group
Meeting 2



giving
nature
a home



Environment
Agency

NATURAL
ENGLAND

Stakeholder Liaison Group Agenda

1	Introductions	5 mins
2	Review of notes from last meeting	5 mins
2	Brief project update and discussion	15 mins
3	Workshop on Public Access	45 mins
4	Public Exhibition Draft Display Boards	30 mins
6	Next steps	5 mins
7	Date of next meeting	
8	Close	

The Moors at Arne Project



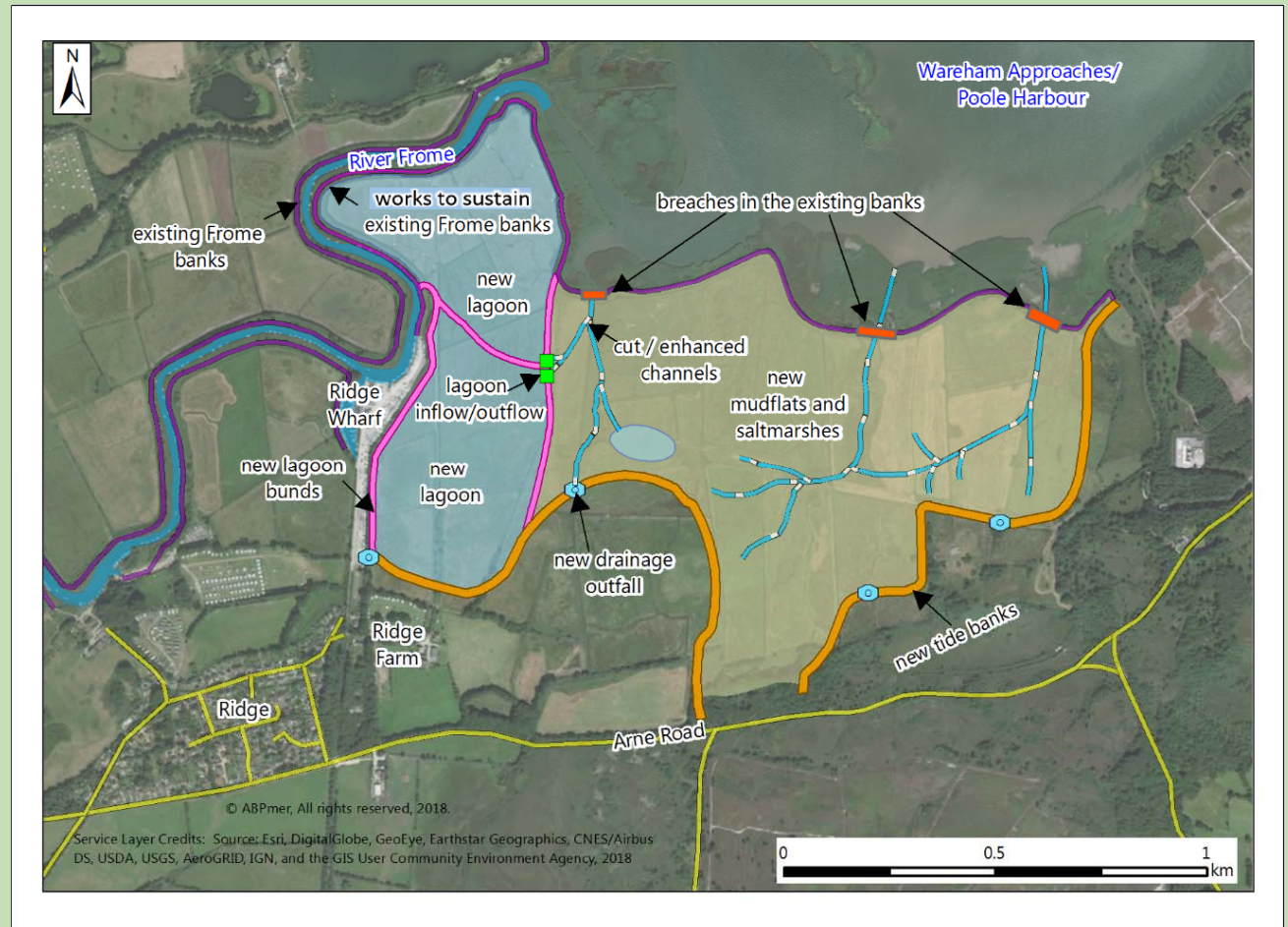
Brief Project Update

Ongoing work:

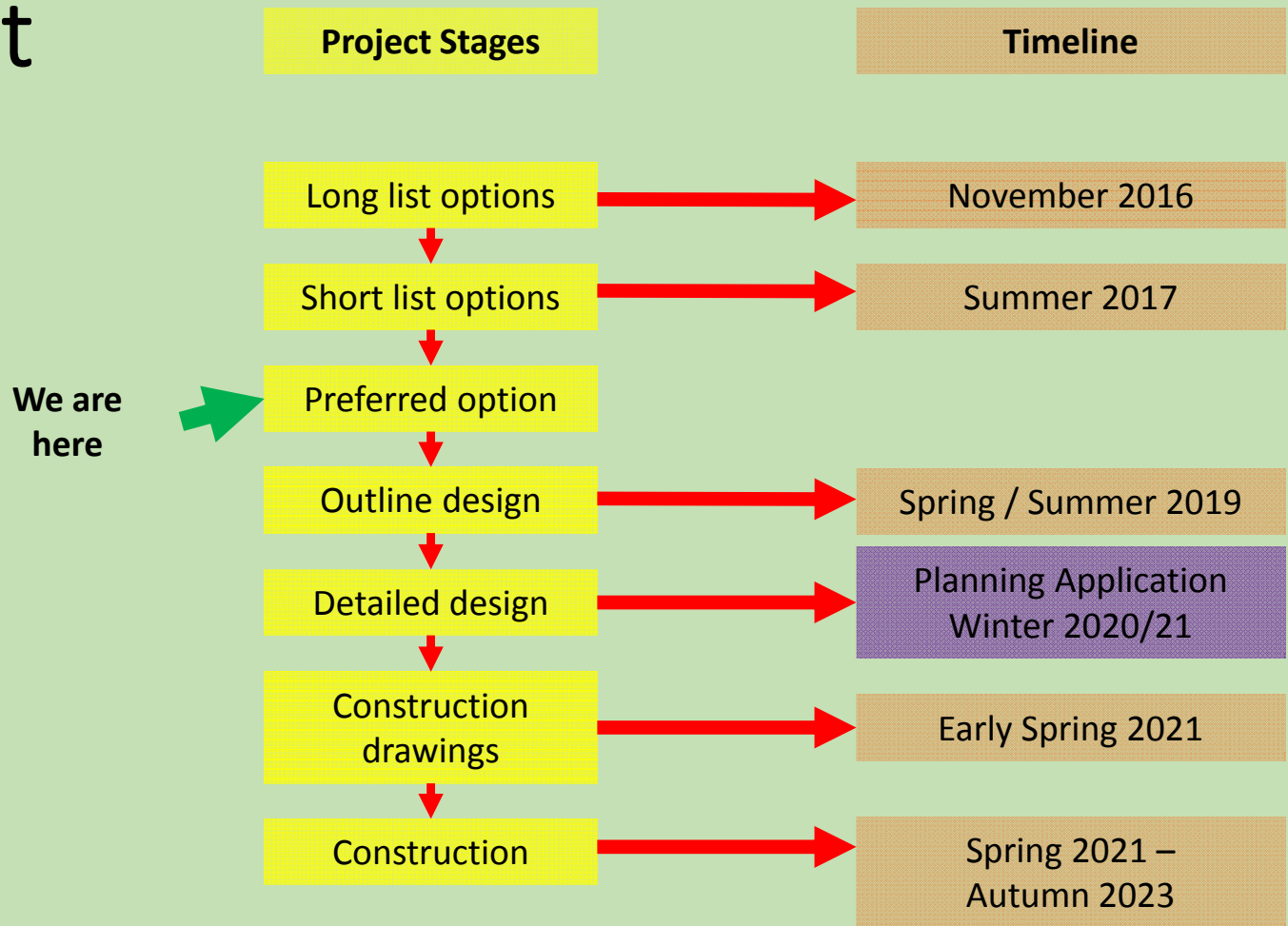
1. Continued monitoring of ground and surface water levels – to continue over winter
2. Modelling – tidal and freshwater
3. Ecological assessments – review of recent survey data
4. Refinement of embankment position
5. Preparation for Public Exhibition

Brief Project Update

Slightly revised main embankment layout.



Brief Project Update



Visitor Access Workshop

Introduction



Visitor Access Workshop

Overview

1. Visitor Access Principles
2. Views about access
3. What might this look like
4. Next Steps

Original Visitor Access Principles

- We do not want access to have a negative impact on wildlife
- We do want to provide access that will be beneficial to people, especially within local communities

Original Visitor Access Principles

- We do not want access to have a negative impact on wildlife
- We do want to provide access that will be beneficial to people, especially within local communities

Revised Visitor Access Principles

We do want to provide access but

- We do not want access to have a negative impact on wildlife
- We do not want access to have a negative impact on people, especially within local communities

Visitor Access Workshop

Visitor Access Principles

We do want to provide access but:

We do not want access to have a negative impact on wildlife

We do not want access to have a negative impact on people, especially within local communities

Our initial expectations are that...

RSPB Arne will be the main focus of access

We are not proposing any significant infrastructure at Arne Moors

Enable 'non-car' access where possible

Limit access to permitted trails and viewing points

Access will be integrated into the scheme at the design stage

Visitor Access Workshop

Views about access

Please use the post-it notes to annotate the boards around the room with your views on access

Consider your personal views and those of the groups you represent

Hopes

ideally I would like to...

Fears

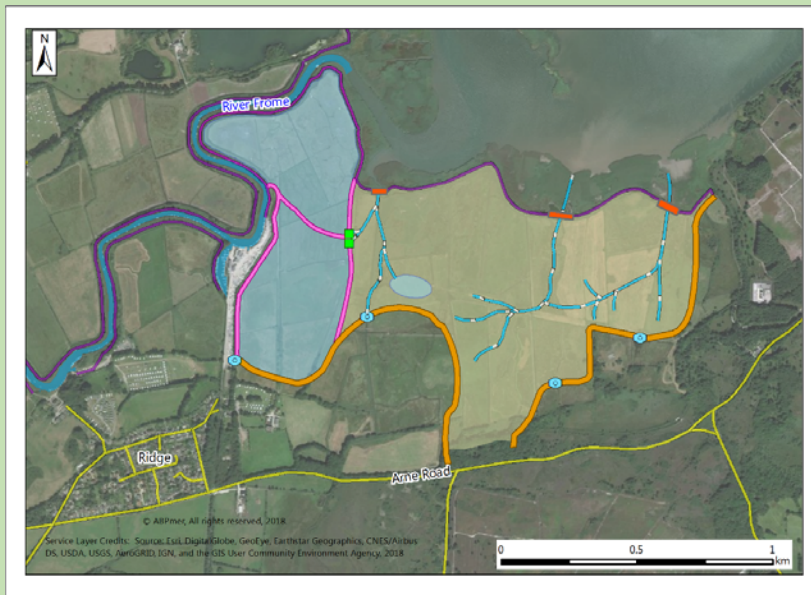
I'm concerned that...

Expectations

I would assume I'd be able to...

Visitor Access Workshop

What might this look like



- Context – access on surrounding land
- Who – Different user groups (Families visiting Arne, Local Residents, birdwatchers)
 - *Where will people want to go*
 - *What will they want to do / see*
 - *When or how often will they visit*
 - *How will they do this*
- Constraints
 - *Extent of the project area*
 - *Designated land*
 - *Disturbance*

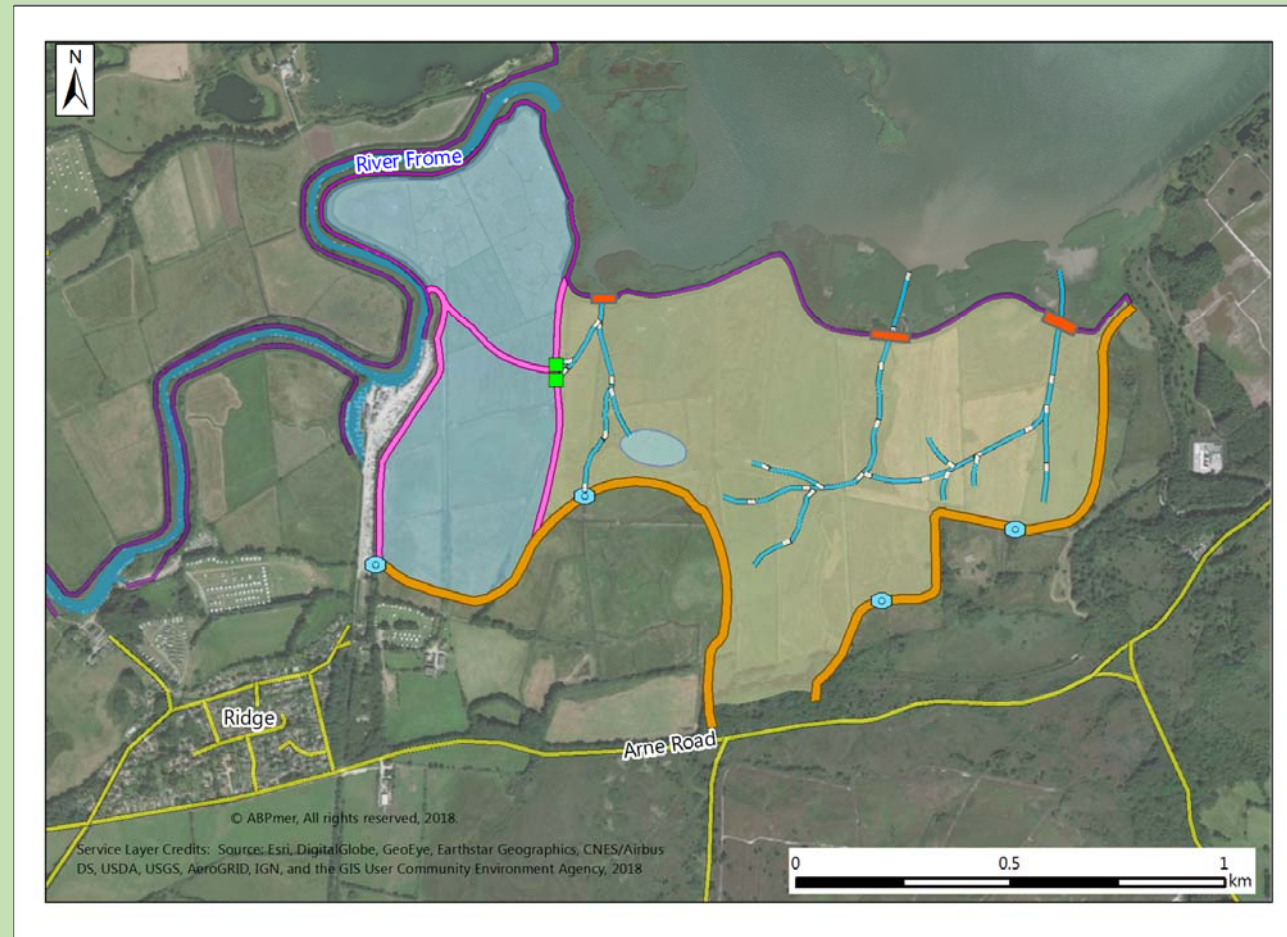
Visitor Access Workshop

What might this look like

Thinking about the proposed design, how might this work in practise?

Feel free to annotate the maps on your table

Could one of you summarise back to the group at the end



Visitor Access Workshop

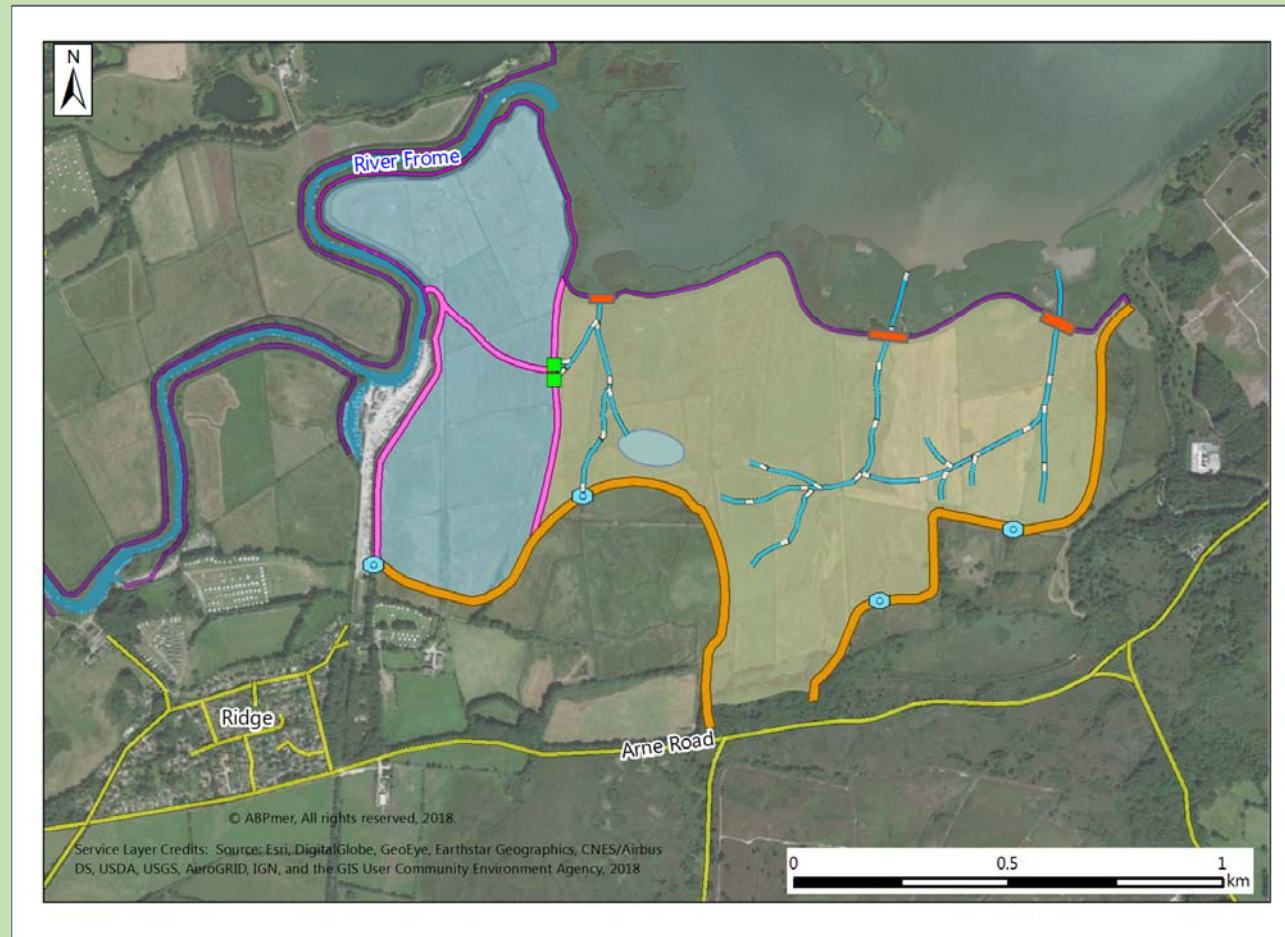
Next Steps

Thank you for sharing your views, which we will try to collate

Continue to give us your feedback (directly or via the project e-mail address TheMoorsAtArne@environment-agency.gov.uk)

We will present our latest thoughts at the next public meeting

We will continue to consult on access as part of the project



Public Exhibition

- 28 November
- Wareham Town Hall
- 2-7pm

- Objectives:
 1. To share what we've done so far, including extra work following comments made last year.
 2. Explain what happens next
 3. To continue to receive comments on work done so far
 4. Encourage people to share any new concerns and issues with us

Public Exhibition

Display Boards

- Draft boards are around the room
- Will also have detailed material:
 1. Flood risk
 2. Access
 3. ???
- Please make suggestions and comments

Next Steps

- Intertidal modelling
- Freshwater modelling
- Flood Risk assessment
- Ecological assessments
- Environment Agency Assurance (Outline Business Case Approval)
- Appoint Detailed Design Consultant

Stakeholder Liaison Group

- Thank You

The Moors at Arne Project

