

Poole Bay Beach Management Scheme

Hengistbury Head Long Groyne

Dorset Coast Forum

Zak Bourn

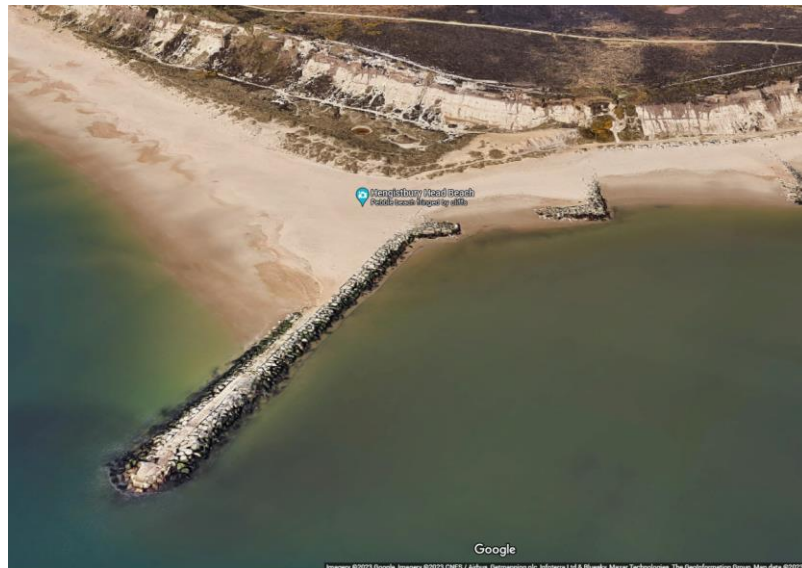
Wednesday 27th September 2023

Marsham Court Hotel, 3 Russell Cotes Road, East Cliff, Bournemouth

Poole Bay Beach Management Scheme

- Timber Groyne Renewal
- Beach Renourishment Schemes
- **Hengistbury Head Long Groyne:
Repair and Upgrade**

- Constructed 1937/1939
- Concrete Groyne reinforced by rock armour
- Nominally 180m long
- Vital role in maintaining the stability of the headland.



1937/1939



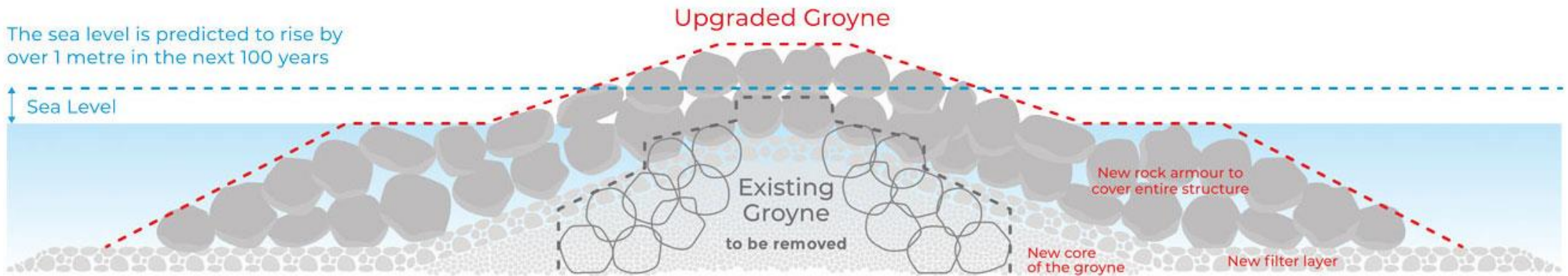
Jan 2023



2019



The sea level is predicted to rise by over 1 metre in the next 100 years



Cross section of proposed long groyne improvements

Marine Enhancement Scheme

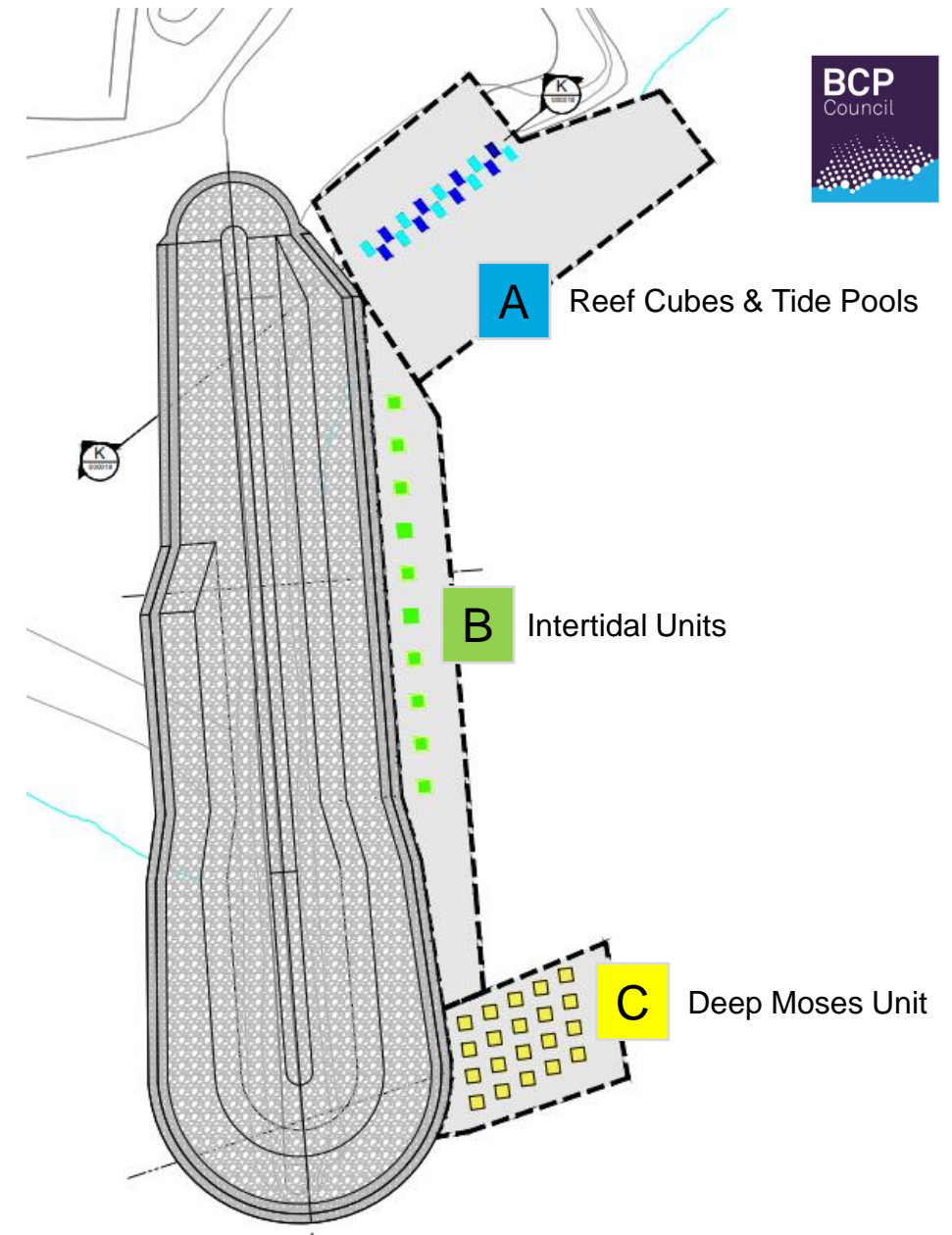
- Budget £300k
- Re-establishing rocky foreshore environment
- Optioneering carried out by WSP and Bournemouth University Group

Environmental Enhancements

Optioneering carried out by WSP and Bournemouth University Group

- Limestone paving;
- Pre-cast concrete blocks/ slabs;
- Re-use of concrete from nearby demolition sites
- Bespoke matting;
- Rip-rap and bespoke tide pools;
- Gabion baskets (inter-tidal only);
- Re-use of timber groynes (inter-tidal only);
- Beach statues;
- Artificial reef units (sub-tidal only); and,
- Sinking vessel/ tanks (sub-tidal only).

Environmental Enhancements



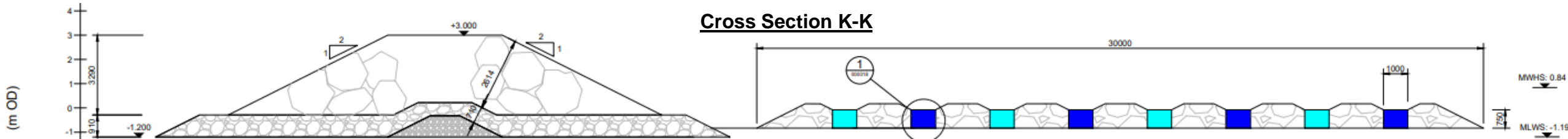
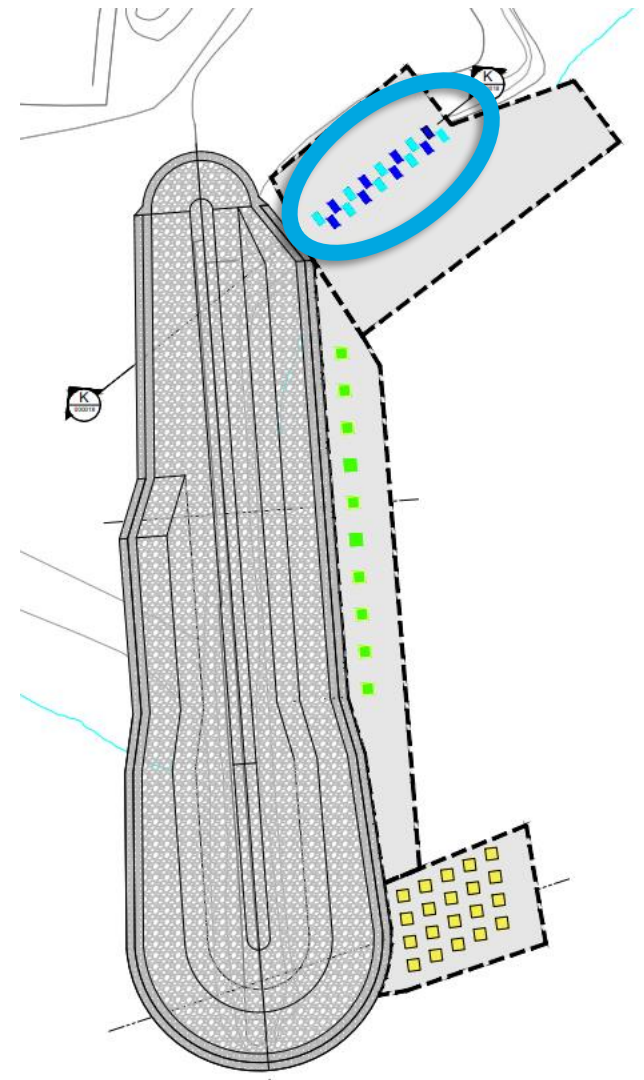
Marine Enhancement Area A



ARC Marine® Reef Cubes®
750 (h) x 1000 (w)



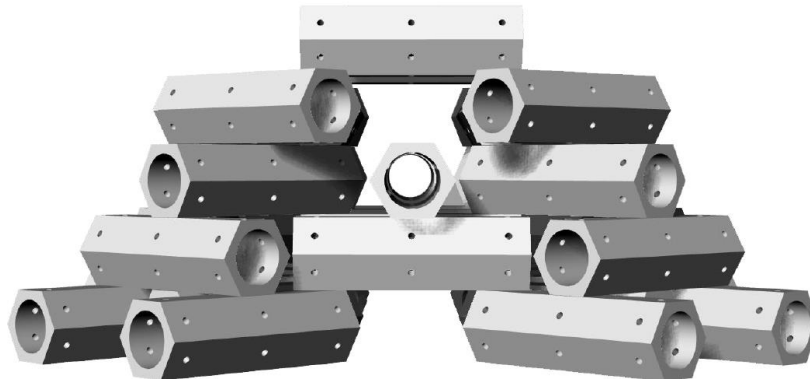
ReefSystems' Reef Pool



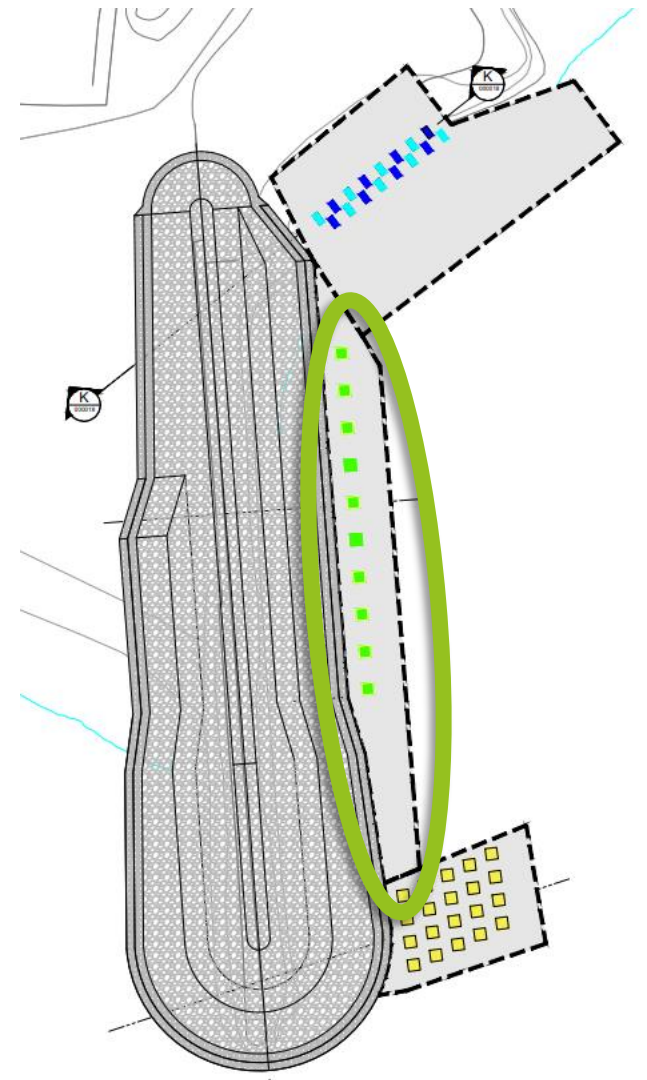
■ Marine Enhancement Area B



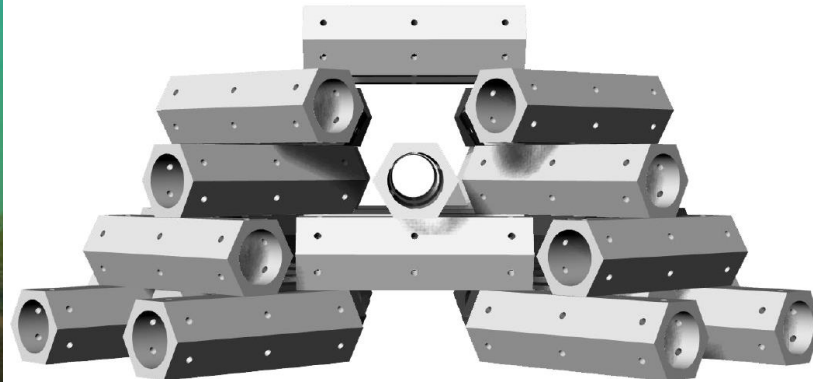
ARC Marine® Reef Cubes®



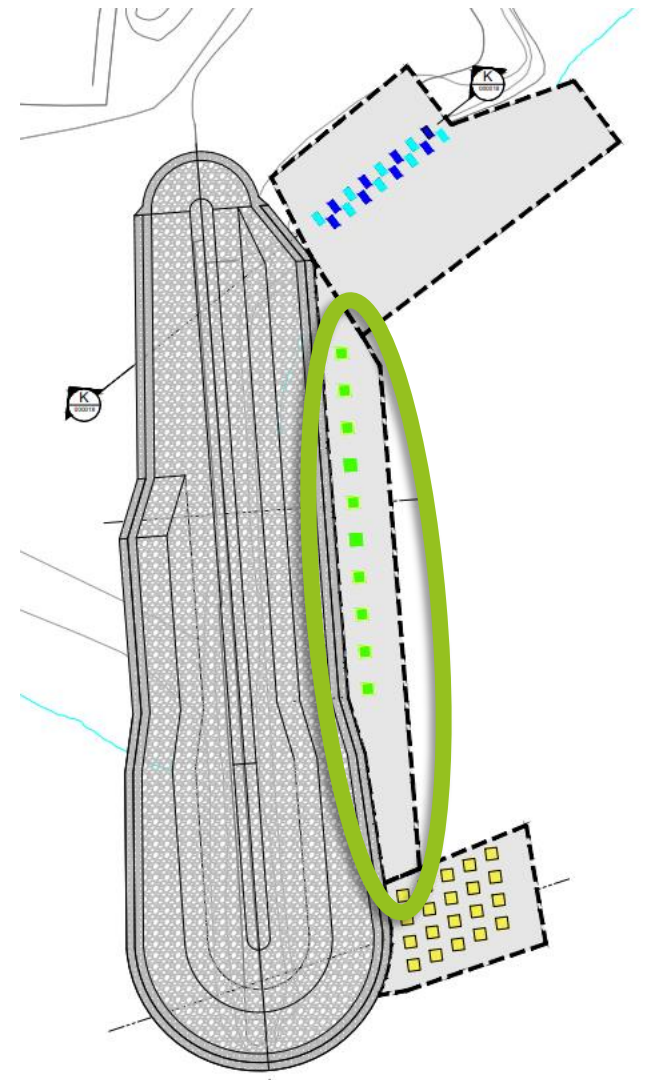
Modular Seafife System (MOSES)
Five Layers



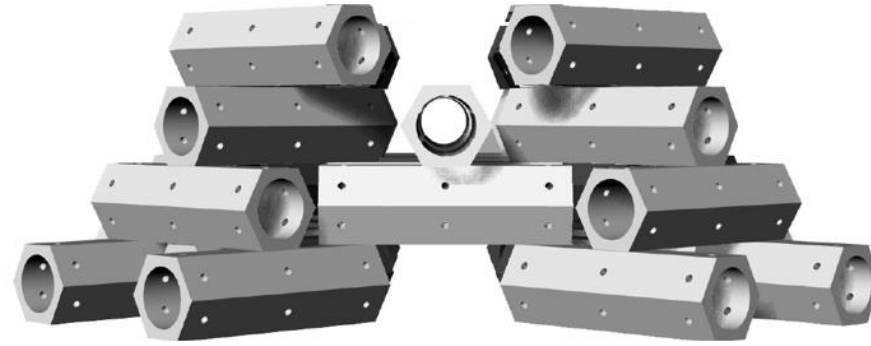
Marine Enhancement Area B



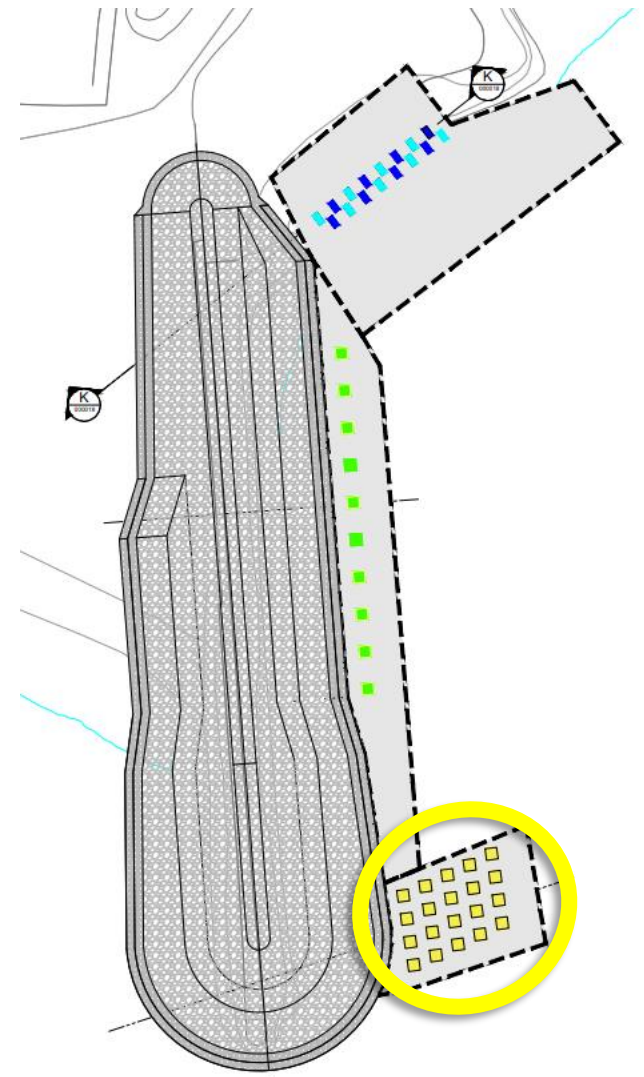
Modular Sealife System (MOSES)
Five Layers



Marine Enhancement Area C: Deep



Modular Sealife System (MOSES)
Four Layers



Modular Sealife System - **BEFORE**



Modular Sealife System - **AFTER**

Marine Enhancement: Rock “Munching”



Rock “Munching”



Licencing & Consenting

- Planning Permission
- MMO
- Natural England – SSSI
- English Heritage – SMC
- Crown Estate
- Trinity House

Environmental Enhancements

- **Terrestrial habitat environmental improvement:**
 - BCP Core Strategy 30 – Environmental improvement
 - Natterjack Toad ponds to be funded by the project and delivered under condition as part of the planning permission



Natterjack Toad Pond



Project Programme



Thank you

Updates available at www.twobays.net