

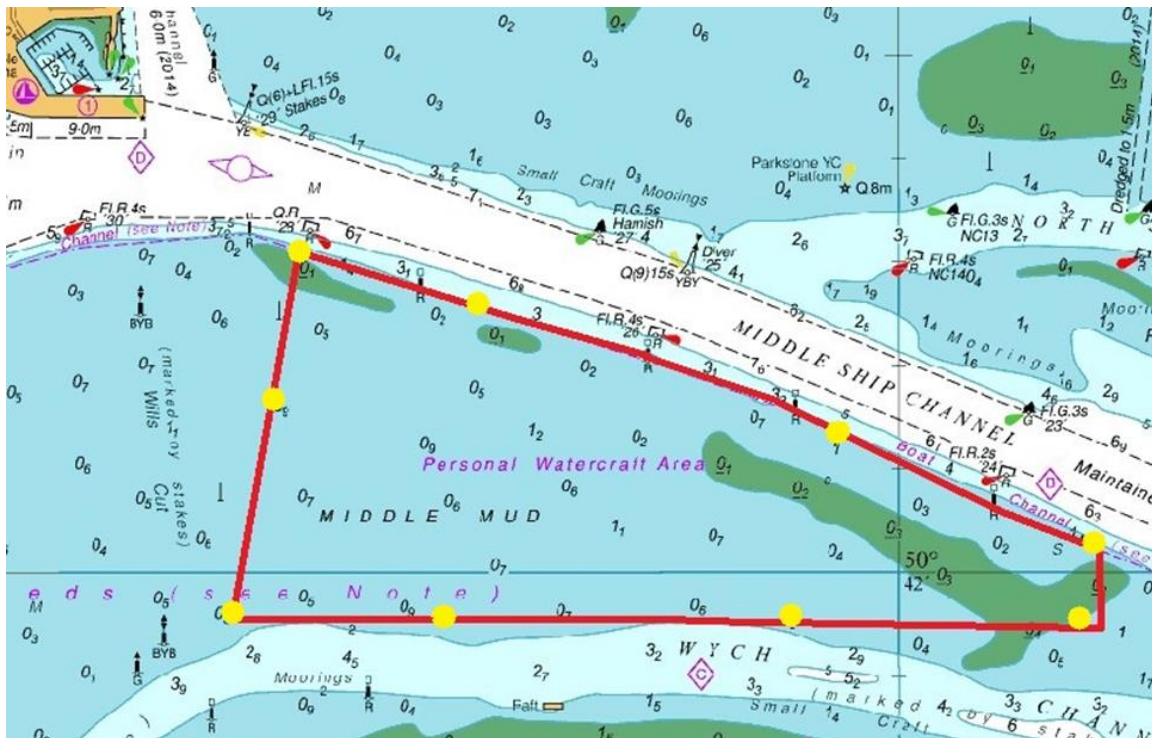
### PERSONAL WATERCRAFT IN POOLE HARBOUR

#### THIS NOTICE REPLACES LNTM 24/2013

Information from recreational surveys continually highlights the need to maintain designated areas for certain water sports, where their activity can be carried out with the minimum of disturbance to wildlife and other users. The use of these zones assists in the reduction of disturbance to ecologically sensitive areas and in minimising the dangers associated with the mixing of powered and non-powered craft. Since its introduction in 1995 the zoning scheme has proved very successful in managing the multifarious recreational activities within the Harbour and the majority of users are now aware of, and restrict their activities to, the relevant areas.

A designated personal watercraft (PW) area to the North of Brownsea Island lies within the area marked by yellow buoys. (See chartlet below). Persons engaged in this activity are exempt from the speed limit while in this area, other vessels are not. PW's outside of this designated area must adhere to the speed limit in force.

### DESIGNATED PERSONAL WATERCRAFT AREA IN POOLE HARBOUR



**The Poole Harbour byelaw 2(e) states:**

*Within the limits of Poole Harbour no person shall engage or take part in Water-skiing, ascending by towed kite or parachute or the use of a jet ski or hovercraft, except with the written permission of the Harbour Master, given either specifically, or generally, and only in such areas as have been designated and in accordance with such reasonable conditions and subject to such directions as may be imposed or given. In this byelaw the term “jet ski” means any watercraft referred to as a jet ski, wet bike, water scooter, fun craft or of other similar description which craft is designed to carry a person or persons standing, kneeling, sitting or prone upon the craft and which craft is propelled by a jet engine the master of which craft steers it with or without a rudder at the stern by means of a handlebar operated linkage system and/or by altering the relationship between the body weight of the person or persons carried on the craft and the craft itself.*

The purchase of a Personal Watercraft permit satisfies that part of the bylaw which requires the written permission of the Harbour Master. Permits are obtainable on-line from our website ([www.phc.co.uk](http://www.phc.co.uk)), from the Harbour Office or Poole Quay Boat Haven.

The reference to “harbour” shall include all the water over which Poole Harbour Commissioners have jurisdiction.

**The following conditions will apply:**

- All PWs must be datatag registered by the current owner. The registration number must be clearly displayed on the craft.
- PWs are exempt from the speed limit in the designated PW area to the north of Brownsea Island.
- All PWs must have a valid permit. This is the equivalent of Harbour Dues and signifies the Harbour Master’s written permission to use the harbour, therefore complying with Byelaw 2 (e) on page 1.
- PWs are not permitted in the quiet area to the south of Brownsea Island. They must not linger in the harbour entrance or main shipping channels.
- PW’s are not permitted to tow any object or person or have any attachment to the propulsion system unless for the purposes of saving life at sea.
- All persons using a PW in Poole Harbour **must** be covered by appropriate PW insurance to cover third party risks as a minimum.
- The PW permit must be carried at all times.
- The use of PW’s is permitted only from sunrise to sunset.
- Transgression of these Terms and Conditions **may result in the withdrawal of the permit, and prosecution.**

**All operators must agree the following declaration:**

*“I will not permit any person less than 16 years of age to operate my PW unless that person is in possession of a recognised and appropriate RYA certificate and is covered by appropriate PW insurance. I understand the Harbour Master’s directions set out above and agree to abide by them.”*

**Please Note:**

- Serious offences **may lead to prosecution under Poole Harbour Byelaws for which the maximum fine is £1,000 plus costs**. Copies of the Byelaws are available from the PHC website.
- The speed limit within the harbour is 10 knots, and within the Little Channel and Holes Bay it is 6 knots. There is a speed limit of 5 knots within 200 meters of Poole and Studland beaches.
- There is 24-hour CCTV coverage of the harbour including the PW area.

**Mariners are reminded that radar, telephone and VHF Channels are recorded.**

Owners, Agents, Charterers, Marinas, Yacht Clubs and Recreational Watersport Organisations should ensure that the contents of this Notice are made known to the masters or persons in charge of their vessels or craft.

**CAPTAIN BRIAN MURPHY  
HARBOUR MASTER**

All Local Notices are available on the PHC website:

[www.phc.co.uk/leisure/harbour-control/local-notices-to-mariners](http://www.phc.co.uk/leisure/harbour-control/local-notices-to-mariners)