



## News from The Moors at Arne



July 2024 edition



Things are really starting to take shape here at Arne Moors this month. The new embankments are progressing nicely and some of the features of the new freshwater area have been dug giving a glimpse of what the completed scheme will look like.

Meanwhile out in the northeast corner of site, the archaeologists are continuing to uncover more exciting clues to help piece together the history of Arne Moors.

## Embankment construction underway

The new embankments are now officially under construction! The earthworks team are currently working on the new western embankment as well as the slightly smaller embankments which will surround the saline lagoons.

The embankments are being constructed from material sourced from within the site following a thorough testing process which confirmed suitability for the job. Once constructed to the required height the embankments will be made watertight with an impermeable core. The western embankment will be 25m wide at the base and a 5m wide at the top to allow access for service vehicles. Visitors to the completed scheme will be able to walk alongside the embankment on a new permissive footpath with views across the new freshwater area and several viewing points will enable visitors to look out over the saline lagoons and intertidal area.



## Freshwater area

The new enhanced freshwater area in the southwestern corner of site will be protected by the western embankment and will provide high quality habitat for a diverse range of freshwater species.

Work has now begun on creating some of the key features of this area. The Furzebrook stream is being realigned to a more natural meandering route as shown here.



In the 1960s the stream was straightened when the land was being used for agriculture. The realigned stream will offer more suitable habitat space for species such as watervoles.

Three of the planned 15 freshwater ponds have now been dug. These will further enhance the area by providing habitat space for plants and animals including dragonflies and damsel flies.



## Romano-British industry at Arne Moors



Last month we shared an exciting update on some of the archaeological discoveries so far this year. If you missed this you can catch up with last month's newsletter [here](#).

The story continues this month as a second kiln has now been discovered just metres away from the first.

Within the second kiln, the archaeologists have found several black burnishware pots which seem to have been left inside following its final firing. These will be carefully excavated and dated over the coming months.

Other smaller items found recently include a Roman coin and a smooth stone tool which is thought to have been used to help shape the rims of some of the pots.



## Birds at Arne Moors

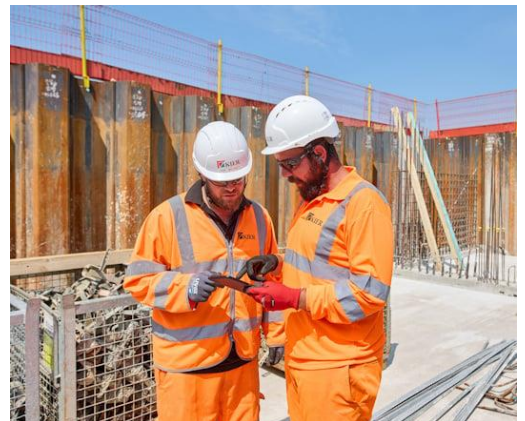
Arne Moors is home to many different species of birds and as nesting season continues we are taking an adaptive approach to the works to ensure that no active nests are disturbed. Our site ecologists monitor the nests and are always on the look out for any changes to ensure we have the correct exclusion zones in place.

Here are a couple of pictures of some of Arne's impressive birdlife taken by our ecologists whilst out and about. On the left is a mistlethrush and on the right a majestic red kite soaring above site.



## Coming soon

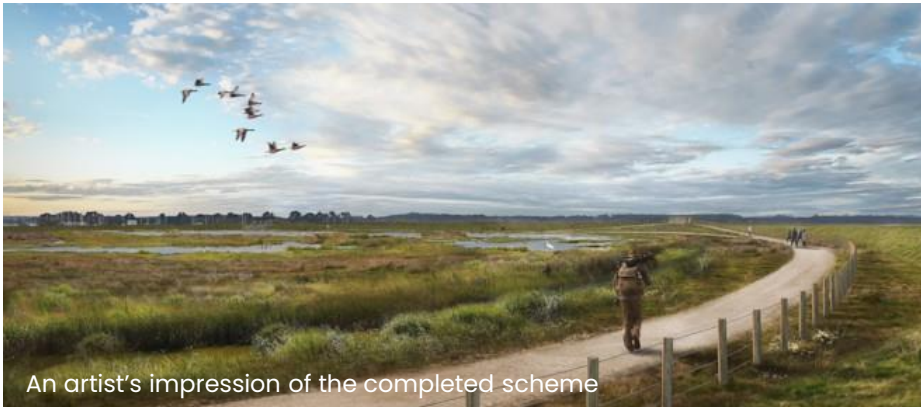
Later this year we will start work on three new outfall structures in the east of site. These structures will sit within the eastern embankment and will discharge surface water into the estuary.



## About the project

The Moors at Arne project is adapting over 150 hectares of land into a diverse wetland habitat. This type of habitat is being lost in other areas of Poole Harbour due to 'coastal squeeze'. This is a term used to describe the effect of rising sea levels pressing against man-made structures such as flood defences resulting in a loss of intertidal habitat such as mud flats and salt marsh.

Kier is the contractor delivering this project on behalf of the Environment Agency and their project partners, RSPB and Natural England.



An artist's impression of the completed scheme

## Keeping in touch

We welcome your feedback and are here to answer any questions you may have about the project. Please email [arne@kier.co.uk](mailto:arne@kier.co.uk)

For more information about the project please visit our web pages

<https://www.dorsetcoast.com/project/moors-at-arne-coastal-change-project/>

