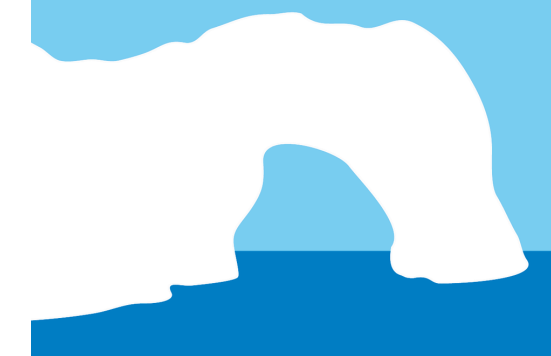


# DCF Annual Conference 2024

## Speaker Biographies



### **Tony Flux, Dorset Coast Forum Chair**

Tony graduated in 1971 with a degree in Applied Biology & Pesticide Chemistry and then worked as a field trials Biologist for a large Agrichemicals Company in Lincolnshire. In 1999, Tony returned to university, undertaking a Master's degree in Coastal Zone Management and graduated in 2001 with a Distinction. There followed working for the Dorset Coast Forum as Project Officer until, in 2007, he accepted a post with the National Trust as their Coast and Marine Adviser. Areas of responsibility included coastal erosion & flooding, geo-engineering, public access & safety, as well as community awareness-raising to issues surrounding climate change and sea level rise.



Tony Flux

### **Toni Powell, Dorset Coast Forum Coordinator**

Toni joined as DCF Co-ordinator in October 2021, overseeing the DCF Team. After completing an MA in Environment and Development, Toni worked in the community, charity and fundraising sectors for over 25 years, developing a range of skills and experiences. Toni is a strong advocate of partnership working and engaging local communities in decision making, which together result in successful projects that benefit communities, economies and the environment. In her spare time Toni enjoys swimming, coastal walks and checking out cake shops in seaside towns.



Toni Powell

### **Dave Picksley, Senior Advisor, Environment Agency**

Dave is a Senior Advisor in Flood & Coastal Erosion Risk Management (FCERM) for the Environment Agency working along the Dorset coast. He is involved in a variety of different FCERM schemes, strategies and research projects, both on the Dorset coast and nationally. He has previously been employed by a marine and coastal consultancy firm and two different Local Authorities in specialist coastal roles. In his spare time he enjoys watersports and spending time outside with the family.



Dave Picksley

### **Alan Frampton, Strategy, Policy & Environment Manager, South West Flood & Coastal**

Alan is the Strategy, Policy & Environment Manager at South West Flood & Coastal, a recently formed shared service between BCP Council and East Devon District Council. The shared service provides an effective and coordinated approach to minimise flood and coastal erosion risks to people and communities within their regions, as well as offering their expertise across the South West. Alan draws on more than 23 years' experience working in the sector, with 18 of those at consultancy Halcrow (which became CH2M and now Jacobs), where his work included: leading on the delivery of two Shoreline Management Plans; co-authoring the Coastal Change Adaptation Planning Guidance for England published in 2015; and contributing to chapters of the CIRIA Beach Management Manual (second edition).



Alan Frampton

### **Saskia Elliott, Protected Site Strategy Officer, Jurassic Coast Trust**

Saskia Elliott is the lead Project Officer for the Geo-Heritage Sustainability Study (GSS), a Protected Site Strategy Project funded by Natural England, at the Jurassic Coast Trust. The GSS project assesses the condition and vulnerabilities of the 95-mile Jurassic Coast UNESCO World Heritage Site. Saskia previously earned a distinction in her MSc in Engineering Geology from the University of Portsmouth, with a dissertation focusing on landslides in West Dorset, before working for a couple of years in geo-environmental and geo-technical projects across the UK. Privately, she has been engaging in science outreach via social media for several years, but is now using video formats to communicate the GSS project to the public and stakeholders.



Saskia Elliott

### **Tracey Churcher, General Manager, National Trust Purbeck**

Tracey is the general manager of the National Trust Purbeck Estate which includes, Studland, the South Purbeck Coast, Corfe Castle and the Purbeck Heaths. She has worked in both cultural and natural heritage for over twenty years. She currently has a focus with her team and partners, to scope the future of Studland, a nature rich area, under the dual pressures of over a million visits each year and rapid coastal change.



Tracey Churcher

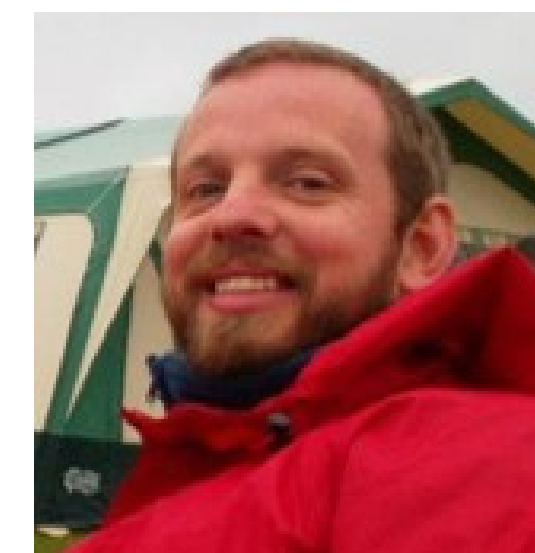
# DCF Annual Conference 2024

## Speaker Biographies



### **Ross Fitzgerald, Associate Director of Geomorphology, Jacobs**

Ross is a specialist in the application of geomorphology and engineering geology to the quantitative analysis of geohazards. His work is focused on the investigation and analysis of landforms, soils and rocks, and natural processes for clients who make significant investments in developments in potentially hazardous locations. Ross advises such clients regarding the exposure of people and assets to natural hazards through the appropriate understanding of ground conditions and provides recommendations on mitigation, adaptation and resilience. Ross was appointed as Jacobs Technical Advisor for Natural Terrain Geohazards and Risk Assessment in 2019 and for Sustainability and the Environment in 2020.



Ross Fitzgerald

### **Julian Gray, Director, South West Coast Path Association**

Enjoying the great outdoors has been in my DNA since early childhood wandering the North Pennines and, as a teen, exploring the East Anglian coastline. I discovered the South West Coast Path during field studies at Slapton as an Environmental Science undergraduate. Having worked and travelled around the world we're very lucky to have such amazing natural and cultural heritage on our doorstep and a world-class trail leading us to and through these special places.



Julian Gray

### **Keynote speaker: Chris Hines MBE Hon.D.Sc.**

Chris has been working and campaigning for the environment for over 30 years and revels in inspiring positive change. Co-founder and then Director of Surfers Against Sewage from 1990 till 2000. Regarded as "some of the Government's most sophisticated environmental critics" by the BBC and "Britain's coolest pressure group" by the Independent. Chris was then Sustainability Director at the Eden Project for 5 years. He was awarded an MBE for "services to the environment" and an Honorary Doctorate of Science from the University of Plymouth. He now aims to deliver positive change by working with clients with a shared vision, including sitting on the BBC's Sustainability Advisory Group and has recently given presentations to a wide range of organisations from Accenture to Comic Relief and Pfizer to the RSPCA. ...and he still gets plenty of surfing in!



Chris Hines

### **Simon Wilson, Co-Founder of Wilson Sherriff Ltd**

Simon specialises in facilitating workshops, events and projects both face to face and online, helping organisations consult, collaborate and decide. He holds an MBA degree and has a strong knowledge of public policy, governance, and project management. He is accredited as a Certified Professional Facilitator (Master) and has chaired several not for profit trustee boards.



Simon Wilson

### **Antony Firth, Head of Marine and Coastal Heritage, Historic England**

Antony Firth is Historic England's Head of Marine & Coastal Heritage. He is a marine archaeologist by background and has experience of a wide range of different aspects of heritage at sea, on the coast and inland. He joined Historic England in 2021.



Antony Firth

### **Dr Matthew Wadey, Principal Coastal Scientist, South West Flood and Coastal**

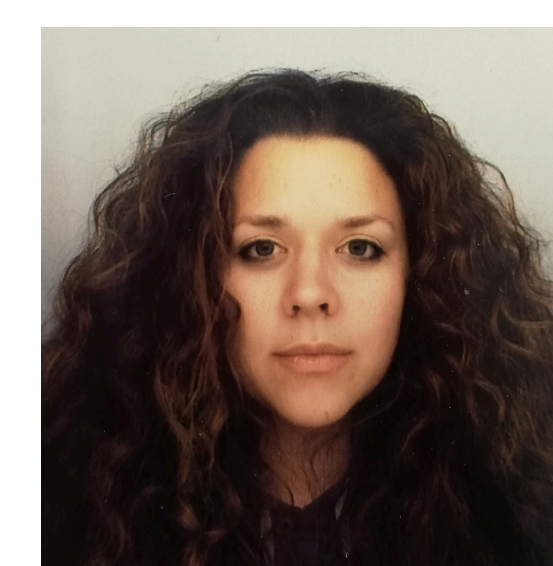
Matthew is Principal Coastal Scientist at Southwest Flood and Coastal, working on behalf BCP Council and East Devon District Council. He lives in Christchurch, and since 2003 has worked in coastal engineering and science, with academic qualifications: BSc (Environmental Geoscience, University College London), MSc and PhD (Civil Engineering, University of Southampton). Matthew is author on over 20 journal and conference publications on topics relating to coastal processes, flooding, and led SCOPAC/Southern Coastal Group research projects about historic landfills and storms. His main work is sourcing and licensing sediment for beach replenishments whilst contributing to a range of duties in Local Authority Flood and Coastal Erosion Risk Management (FCERM).



Matthew Wadey

### **Caroline Barrie-Smith, Head of Audience Engagement, Museum of London Archaeology**

Since joining MOLA in 2018, Caroline manages the national elements of Coasts in Mind and providing a central focus for MOLA's charity grant funded and coastal projects including the award-winning TDP (Thames Discovery Programme) and CITiZAN (Coastal and Intertidal Zone Archaeological Network). Caroline has specialised in archaeology, heritage and traditional craft skills since 2003 and is passionate about teaching archaeology to all.



Caroline Barrie-Smith